



Service-Information

Waschvollautomat Frontlader

AWO 3531

8592 024 29000

Letzte Änderung: 07.06.2008

Anlagedatum: 07.06.2008

| | |
|----------------------------|-----------|
| Ersatzteilliste | 2 |
| Technische Daten | 5 |
| Explosionszeichnung | 10 |
| Anschlußplan | 13 |
| Stromlaufplan | 15 |
| Programmablaufplan | 17 |
| Text /Legende | 24 |

Die vorliegenden Serviceunterlagen sind ausschließlich für technisch qualifizierte Fachkräfte bestimmt, welche mit den entsprechenden einschlägigen Sicherheitsvorschriften vertraut sind.

Änderungen vorbehalten

Ersatzteilliste

| Pos-Nr. | 12NC | Beschreibung |
|----------------|-----------------------|---------------------------------|
| 001 0 | 4812 440 10784 | Gehaeuse GW |
| 002 0 | 4812 440 11131 | Klappe Filteroeffnung eckig EBL |
| 011 0 | 4812 462 48421 | Fuss verstellb. |
| 021 0 | 4812 440 11132 | Front eckige Klappe EBL |
| 024 0 | 4812 440 18998 | Rueckwand |
| 025 0 | 4812 404 38737 | Traeger Steuerung EBL |
| 030 0 | 4812 440 11129 | Arbeitsplatte EBL |
| 040 0 | 4812 417 18787 | Scharnier |
| 050 0 | 4812 440 89097 | Sockelblende EBL |
| 061 0 | 4812 466 88458 | Gegengewicht oben |
| 061 1 | 4812 466 88607 | Gegengewicht vorn, unten |
| 061 2 | 4819 310 39227 | Montagesatz Gewicht oben |
| 061 3 | 4819 310 39228 | Montagesatz Gewicht unten |
| 081 0 | 4812 529 18038 | Stossdaempfer bis 1200 |
| 084 0 | 4812 466 58001 | Silentblock |
| 086 2 | 4812 401 18412 | Stopfen Stossdaempfer |
| 110 0 | 4812 498 18361 | Handgriff Tuer EBL |
| 130 0 | 4812 417 28047 | Platte Tuerschloss |
| 130 1 | 4812 417 28048 | Platte Tuerschloß unten |
| 131 0 | 4812 417 28046 | Verschluss Tuer |
| 131 1 | 4812 417 28045 | Stift Tuerverschluss |
| 131 2 | 4812 492 58022 | Feder Tuerverschluss |
| 135 1 | 4812 498 18262 | Knopf |
| 135 2 | 4812 492 58023 | Feder Tuersicherung |
| 135 3 | 4812 290 68153 | Justier-Element Tuersicherung |
| 140 0 | 4812 450 58981 | Schauglas EBL |
| 143 0 | 4812 440 11141 | Fensterrahmen EBL |
| 144 0 | 4812 440 11139 | Rahmen Schaugl. EBL |
| 191 0 | 4812 466 68729 | Manschette BK 48 I |
| 191 1 | 4812 492 18017 | Schelle |
| 191 2 | 4819 530 58059 | Ring |
| 200 1 | 4812 418 18369 | Bottichhaelfte vorn 48 I |
| 200 2 | 4812 418 18318 | Bottichhaelfte CP4/D hinten |
| 200 4 | 4812 290 88054 | Klemme fuer Behaelter |
| 220 0 | 4812 418 18191 | Trommel 1200 0,5MM PP 48L |
| 271 0 | 4812 358 18056 | Keilrippenriem. WH 125 |
| 272 0 | 4812 528 58027 | Riemenscheibe DIAM.298 |
| 272 3 | 4812 505 18371 | Mutter M 12 |
| 292 0 | 4812 530 58101 | Dichtung Behaelter |
| 301 0 | 4812 452 14567 | Schalterleiste AWO 3531 |
| 303 0 | 4812 498 78629 | Griff Schublade |
| 331 0 | 4812 414 58263 | Knopf Timer EBL |
| 332 2 | 4812 513 18146 | Drucktaste ohne LED EBL |
| 332 3 | 4812 513 18145 | Drucktaste mit LED EBL |
| 333 0 | 4812 513 18143 | Drucktaste Start EBL |
| 333 1 | 4812 513 18144 | Drucktaste Start Delay EBL |
| 400 0 | 4812 361 58376 | Motor |
| 409 0 | 4812 362 48004 | Kohlebuerste Motor CES |
| 421 0 | 4812 121 18142 | Entstoerfilter 1,00 µF |
| 430 0 | 4812 310 28144 | Laugenpumpe KIT |

| Pos-Nr. | 12NC | Beschreibung |
|---------|-----------------------|--------------------------------|
| 451 0 | 4812 259 28835 | Heizelement 2050W,230V + NTC |
| 480 0 | 4812 321 78109 | Kabel Motor SC1/OM PP/ALPHA/GA |
| 490 0 | 4819 321 18136 | Netzkabel 2m SA |
| 491 0 | 4812 321 28367 | Zugentlastung |
| 491 1 | 4812 502 38152 | Schraube 4,8x19 |
| 500 0 | 4812 282 19349 | Timer SC1 programmiert |
| 571 0 | 4812 271 28375 | Magnetventil einfach |
| 581 0 | 4812 271 28441 | Niveauschalter |
| 620 0 | 4812 239 58024 | Modul Timer "B"C/DS |
| 630 0 | 4812 280 58044 | Tuerverriegel. |
| 691 0 | 4812 282 18702 | Sensor NTC (SC1,OMEGA,ACCESS) |
| 701 0 | 4819 530 28848 | Zulaufschlauch |
| 701 1 | 4819 466 69704 | Dichtung und Filter |
| 702 0 | 4819 530 29019 | Schlauch intern |
| 707 0 | 4812 526 48031 | Duese schwenk |
| 707 1 | 4812 526 48028 | Duese Einspuelung |
| 708 1 | 4812 530 48143 | Kruemmer Zulauf |
| 711 0 | 4812 418 68321 | Einspuelbeh. 3 K. EBL |
| 712 0 | 4812 418 68319 | Schublade 3 K. kpl. EBL |
| 713 0 | 4812 418 89042 | Klappe Schublade 3 K. EBL |
| 717 0 | 4819 321 28092 | Bowdenzug |
| 717 1 | 4812 321 38013 | Hebel , Duese |
| 717 2 | 4812 321 38012 | Justier-Element |
| 717 3 | 4812 278 88018 | Gleitstueck |
| 717 4 | 4812 492 38359 | Feder , Duese |
| 717 5 | 4812 282 18807 | Nocken 3 K. SC1/VBL/WH |
| 718 0 | 4812 526 48051 | Saugheber |
| 718 1 | 4812 418 89041 | Trennteil 3 K. EBL |
| 718 2 | 4812 418 89043 | Gitter Schublade 3 K. EBL |
| 753 1 | 4819 418 68234 | Luftkammer |
| 754 0 | 4812 530 28826 | Ablaufbalg |
| 754 1 | 4812 530 28832 | Verschluss eco |
| 754 2 | 4812 530 28829 | Flansch eco |
| 760 0 | 4812 480 58105 | Filter Set Pumpe |
| 781 0 | 4819 530 28847 | Ablaufschlauch |
| 782 0 | 4812 530 28827 | Schlauch Niveauschalter |
| 787 0 | 4812 530 28813 | Schlauch,Entl. |
| 787 2 | 4819 401 18868 | Schlauchschele 26,8 mm |
| 794 5 | 4812 530 58098 | Dichtung Luftkammer |
| 900 0 | 4812 255 18204 | Halter Ablaufschlauch |
| 900 1 | 4812 290 88086 | Halterung Tuerverriegelung |
| 900 2 | 4812 290 88077 | Kabelfuehrung |
| 900 3 | 4812 401 18446 | Kabelfuehrung |
| 900 4 | 4819 401 18872 | Schlauchschele Pumpe/Ablauf |
| 900 5 | 4819 401 18529 | Schlauchschele Bottich unten |
| 900 6 | 4812 401 18444 | Traeger Heizelement |
| 900 7 | 4812 256 98031 | Halter Niveauschalter |
| 900 8 | 4819 401 18823 | Klemme |
| 901 3 | 4812 401 18414 | Schlauchschele |
| 910 5 | 4812 502 18516 | Schraube 4,2 x 13 |

| Pos-Nr. | 12NC | Beschreibung |
|----------------|-----------------------|----------------------------|
| 930 0 | 4819 492 38139 | Feder Aufhaengung |
| 941 0 | 4812 520 28004 | Kugellager 6206 |
| 941 1 | 4812 520 28066 | Kugellager 6204 |
| 953 0 | 4812 530 58099 | Wellendichtring 1200 |
| 961 0 | 4819 532 68829 | Distanzstueck 44, 50, 58 l |
| 965 0 | 4812 466 68545 | Abdeckung BK/WH |
| 993 0 | 4819 530 29028 | Einhaengebogen |
| 993 3 | 4812 395 58004 | Werkzeug |

Technische Daten

Abmessungen + Gewicht

| | |
|-------------------|---------|
| Abmessungen Gerät | |
| Höhe | 85 cm |
| Breite | 59.5 cm |
| Tiefe | 60 cm |
| Gewicht | |
| Netto | 73 kg |

Elektrische Basisdaten

| | |
|---------------------|--------|
| Spannung | 230 V |
| Frequenz | 50 Hz |
| Sicherung | 10 A |
| Anschlusswert | 2.3 kW |

Trommeldaten

| | |
|----------------------|----------|
| Inhalt | 48 l |
| Waschen | 54 rpm |
| Rampendrehzahl | 95 rpm |
| Schleuderdrehzahl | |
| max. | 1200 rpm |

Fassungsvermögen (Trockenwäsche)

| | |
|--------------------------|--------|
| Baumwolle farbig | 5.5 kg |
| Baumwolle rapid | 3 kg |
| Baumwolle kurz | 5.5 kg |
| Feinwäsche | 1.5 kg |
| Mischwäsche | 3 kg |
| Pflegeleicht | 2.5 kg |
| Pflegeleicht rapid | 1.5 kg |
| Pflegeleicht kurz | 2.5 kg |
| Wolle | 1 kg |

Niveauschalter

| | |
|-----------------------|---------------|
| Wasserniveau | |
| Niveau 1 | |
| Schaltpunkt | 60 ± 5 mmWc |
| Rückschaltpunkt | 35 ± 5 mmWc |
| Überlauf | 280 ± 20 mmWc |

Wasserstand in der Trommel

(only switching level inside the drum)

| | |
|----------------|-----------------|
| Niveau 1 | 25 mm - 39 mm |
| Überlauf | 267 mm - 306 mm |
| Nennstrom | |
| Kontakte | |

| | |
|---------------|-----------------|
| 11 - 12 | 4 (4)A |
| 11 - 14 | 16 (4)A |
| 11 - 16 | 1 (1)A |
| Kontaktsystem | |
| 11 - 12 - 14 | spring contact |
| 11 - 16 | sliding contact |

Türverriegelung

| | |
|-------------------|---------------------|
| Verriegelungszeit | (20 °C) |
| min. | 3" |
| max. | 6" |
| Entriegelungszeit | 60" - 90" |
| Nennspannung | 230 V |
| Nennstrom | |
| Kontakt | 4 - 5 16 (4) A |

Heizung

| | |
|----------------|---|
| Bauart | Tubular heating element with NTC - sensor |
| Nennspannung | 230 V |
| Gesamtleistung | 2050 W |
| Widerstand | R25 |
| min. | 22 Ω |
| max. | 28 Ω |

Widerstand NTC

| | | |
|-------|------|----|
| 0 °C | 35.9 | kΩ |
| 30 °C | 9.8 | kΩ |
| 40 °C | 6.6 | kΩ |
| 50 °C | 4.6 | kΩ |
| 60 °C | 3.2 | kΩ |
| 70 °C | 2.3 | kΩ |
| 95 °C | 1.1 | kΩ |

Zulaufventil

| | |
|------------------|------------------------|
| Wassertemperatur | |
| max. | 60 °C |
| Durchflußmenge | < 1 bar 8 l/min |
| Druckbereich | 0.5 bar - 10 bar |
| Nennspannung | 220 V - 240 V |
| Frequenz | 50 Hz |
| Start Spannung | <6 bar 160 |
| 6 - 10 bar | 170 V |
| Nennstrom | 35 mA |
| Nennwiderstand | (20 °C) 3.4 - 4.5 |

k Ω

Gesamtleistung 6 VA

Laugenpumpe

(synchronous)

Nennspannung 230 V
Nennstrom 0.3 A
Gesamtleistung 34 W
Frequenz 50 Hz
Wicklungswiderstand $155 \Omega \pm 7\%$
Motorschutz 170 °C
Nennkapazität 14 ± 2 l/min

(1.25m height)

Steuerung

Typ SC1
Elektronik unprogrammiert 4619 710 67646
CB programmiert 4619 744 81631
Nennspannung 230 V
Frequenz 50 Hz
Positionen 32
Anschluss

| | |
|-----------------|---------------------|
| OA4.1 - OA4.2 | 5. Option |
| OA4.3 - OA4.4 | 6. Option |
| OB4.1 - OB4.2 | 3. Option |
| OB4.3 - OB4.4 | 4. Option |
| OC4.1 - OC4.2 | 1. Option |
| OC4.3 - OC4.4 | 2. Option |
| SLT3.1 - SLT3.3 | Temp.selector |
| SLS4.1 - SLS4.4 | Spin speed selector |
| VCF3.1 - VCF3.3 | Valve (cold water) |
| VHF3.1 - VHF3.3 | Valve (hot water) |
| Pi5.1 = | negative supply |
| Pi5.2 = | data |
| Pi5.3 = | clock |
| Pi5.4 = | positive supply |
| Pi 5.5 = | negative supply |
| PL3.1 - PL3.3 | Pilot lamp |

Anschluss

| | |
|-----------------|----------------|
| M7.1 - M7.7 | Motor |
| DP2.1 - DP2.2 | Pump |
| AQS2.1 - AQS2.2 | Aquastopswitch |
| SET2.1 - SET2.2 | NTC |
| DSS3.1 - DSS3.3 | Door switch |
| PR2.1 - PR2.2 | Pressostat |

Einfach Stecker

| | |
|---------------|-----------------|
| HE2.1 - HE2.2 | Heating element |
| PS2.1 - PS2.2 | Pressostat |
| SM3.2 - SM3.3 | mains switch |

(3 fold connector)

| | |
|---------------------------|-------------|
| Umgebungstemperatur | up to 70 °C |
| Lagertemperatur | up to 85 °C |
| Waschdrehzahl | 54 rpm |
| Rampendrehzahl | 95 rpm |
| Schleuderdrehzahl | 1200 rpm |

Widerstand

(at the selector)

| | | |
|---------|------|----|
| 110 rpm | 4.7 | kΩ |
| 960 rpm | 3.6 | kΩ |
| 780 rpm | 2.7 | kΩ |
| 580 rpm | 1.8 | kΩ |
| 440 rpm | 1.1 | kΩ |
| 95 rpm | 0.68 | kΩ |
| 0 | 0 | |

TD WITHOUT RESISTOR ON PUSH

| | |
|----------------|----------|
| Freigabe | 1160 rpm |
| gedrückt | 580 rpm |

Ausgänge Programmsteuerung

| | | |
|------------------|-----------------|--------|
| Motor | M7.6 - DSS3.2 | >40 V |
| Aquastop | AQ2.2 - DSS3.2 | 230 V |
| in pump step | AQ2.1 - DSS3.2 | 230 V |
| NTC | not measurable | |
| Pump | DP2.1 - DP2.2 | 230 V |
| Doorlock | DSS3.1 - DSS3.3 | 230 V |
| Pressostat | E4 - E2 | 230 V |
| - empty | PR2.1 - E2 | 230 V |
| - full | PR2.2 - E2 | 230 V |
| Valve (Rast 2.5) | V2.1 - V2.2 | >170 V |
| Options | not measurable | |
| Display module | Pi5.1 - Pi5.4 | 5 V |
| | Pi5.4 - Pi5.5 | 12 V |

Motor

Typ MCA 52/64 - 148 t.f./ WHE 0
 Uebersetzungsverhältnis i = 1:13.3
 Widerstände Anschlüsse

| | | |
|-------|-------|------------------|
| 6 - 7 | 68.70 | $\Omega \pm 7\%$ |
| 4 - 5 | 2.15 | $\Omega \pm 7\%$ |
| 5 - 6 | 1.46 | $\Omega \pm 7\%$ |
| 5 - 7 | 0.65 | $\Omega \pm 7\%$ |

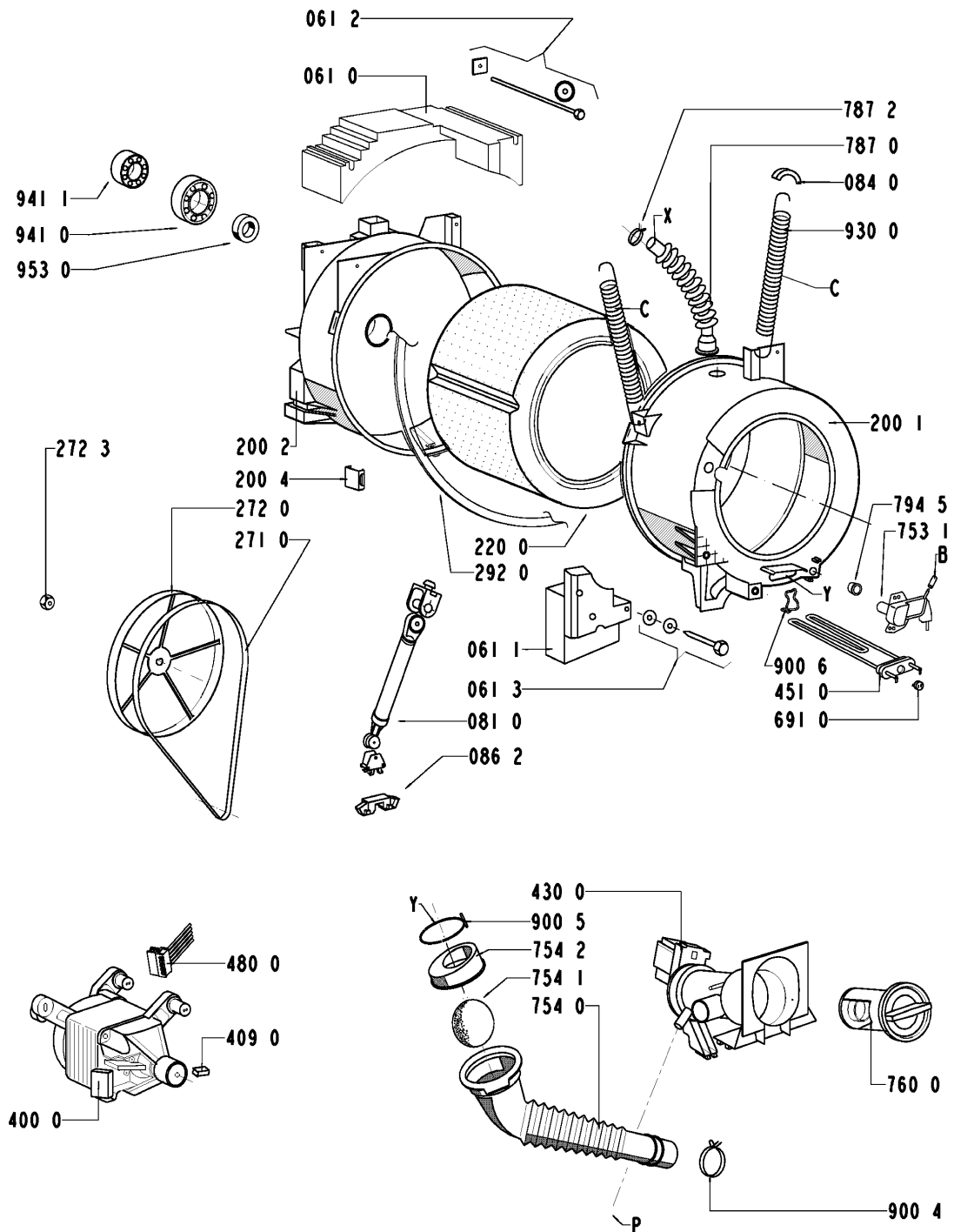
Funkentstörfilter

Typ ISKRA - KPB 7325
 Nennspannung 230 V
 Nennkapazität 250 nF X1 + 2x22 nF Y2 $\pm 20\%$
 Nennwiderstand 1 M $\Omega \pm 5\%$
 Ableitstrom ≥ 4.15 mA (2x2.075 mA) at 250V 50Hz

Drucktastenschalter

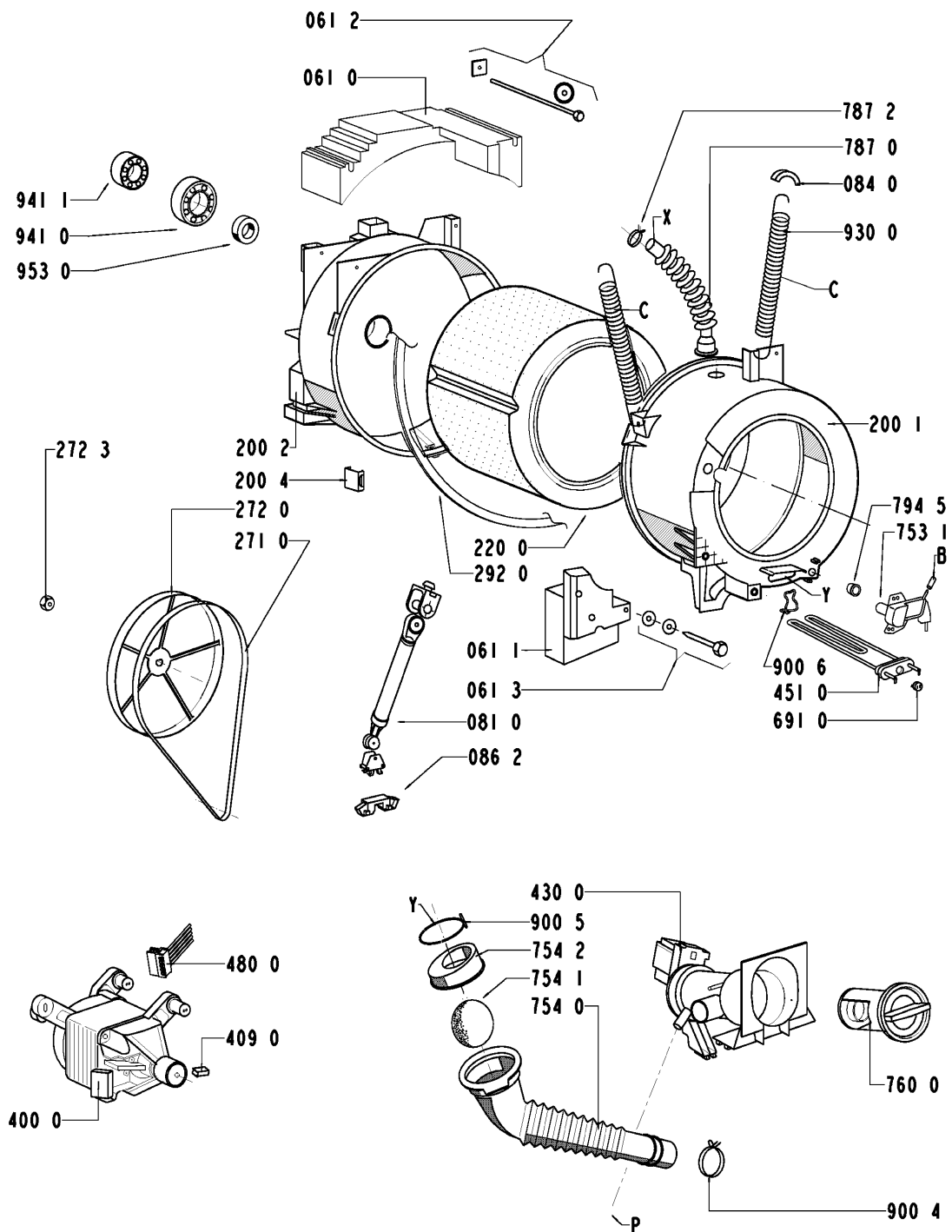
Schalter Start SST
 Schalter start Vorwahl STD
 reduziertes Schleudern SSR
 Schalter Spülstop SRS
 Schalter intensiv Spülen SRI
 Schalter Vorwäsche SPW
 Schalter leicht Bügeln SEI
 Schalter reset
 Restzeitanzeige

Explosionszeichnung



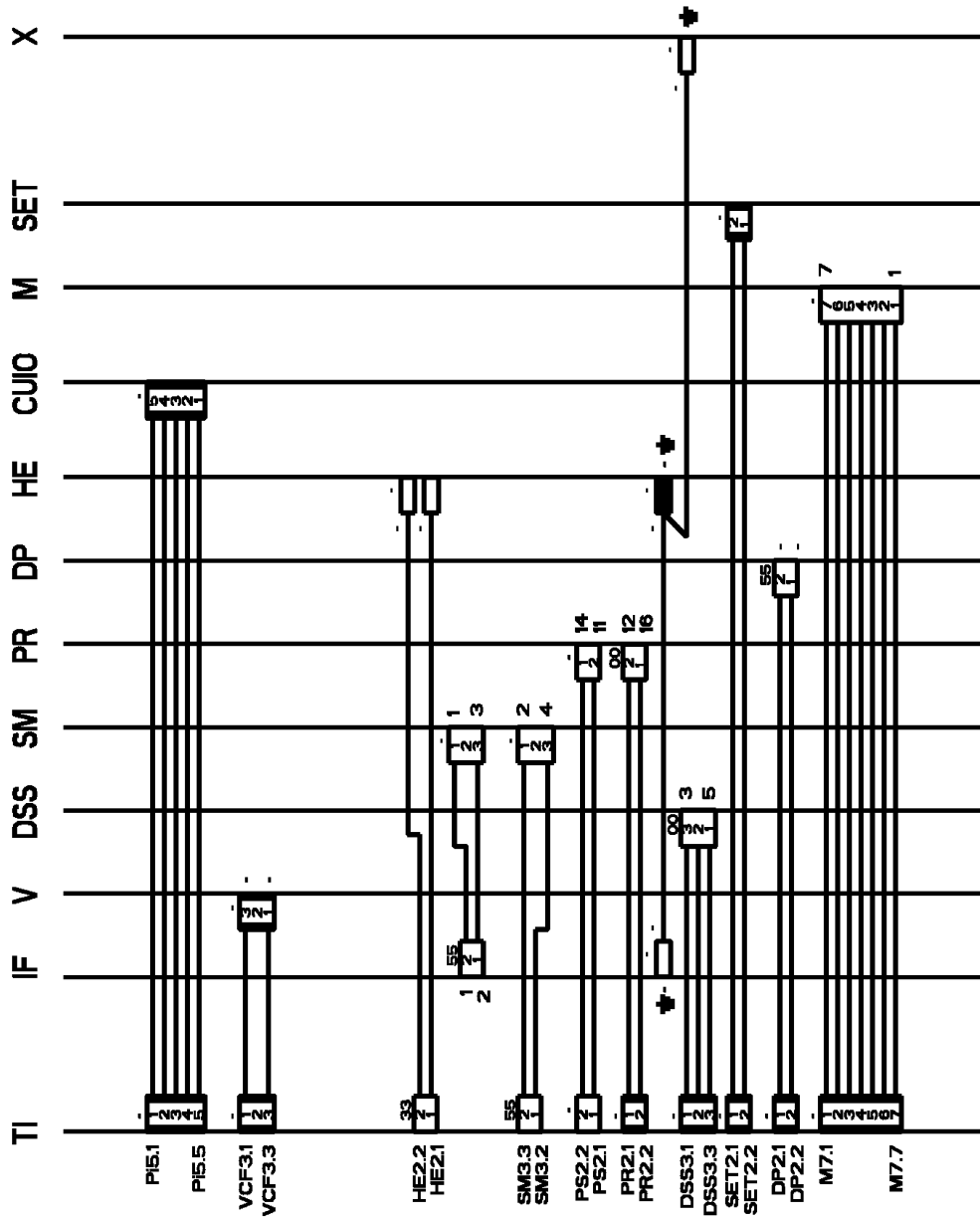
8592 024 29000

Explosionszeichnung



8592 024 29000

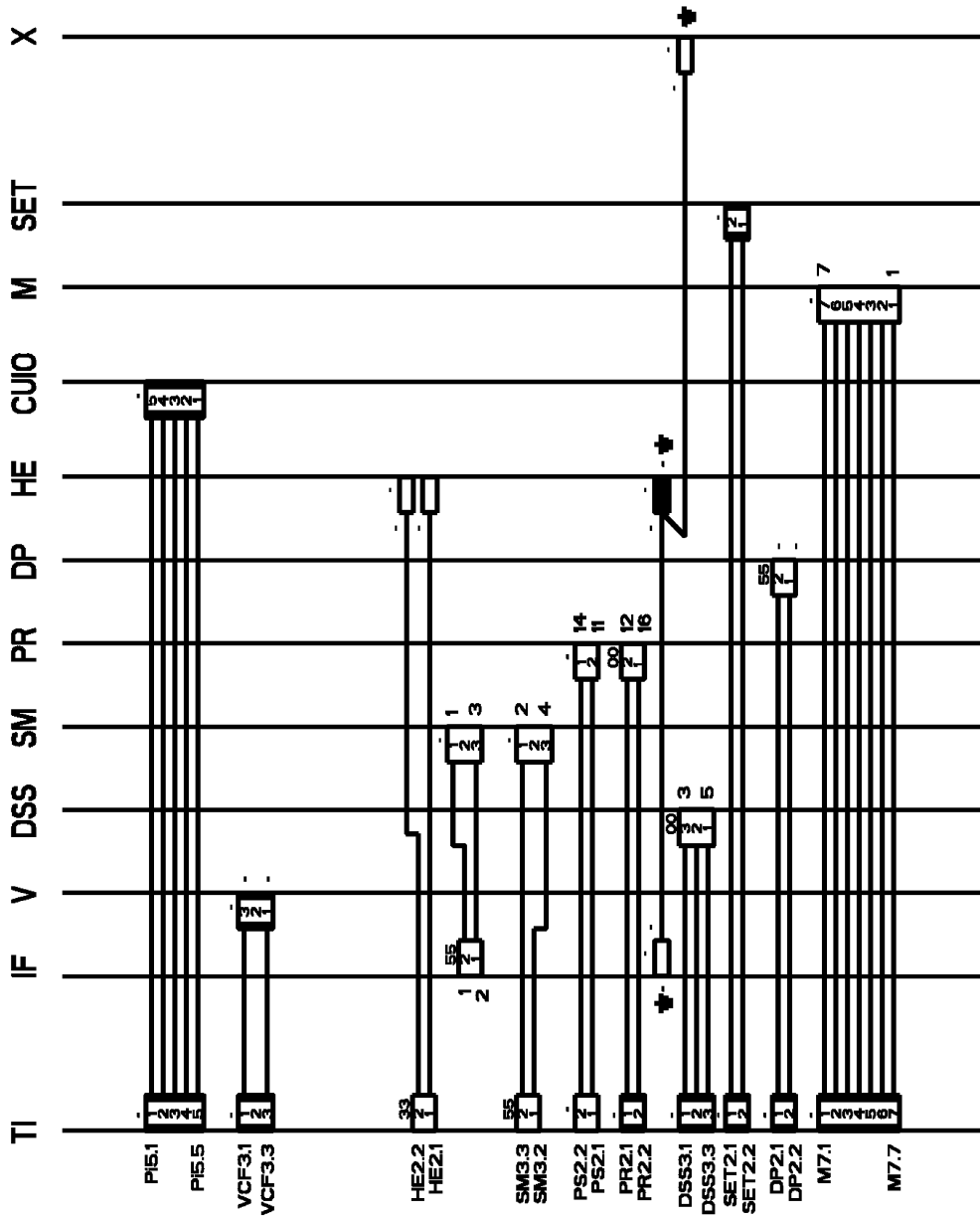
Anschlußplan



- | | |
|----|--------------|
| 00 | black |
| 11 | brown |
| 22 | red |
| 33 | orange |
| 44 | yellow |
| 55 | green |
| 66 | blue |
| 77 | violet |
| 88 | grey |
| 99 | white |
| 45 | yellow/green |

4619 744 43101

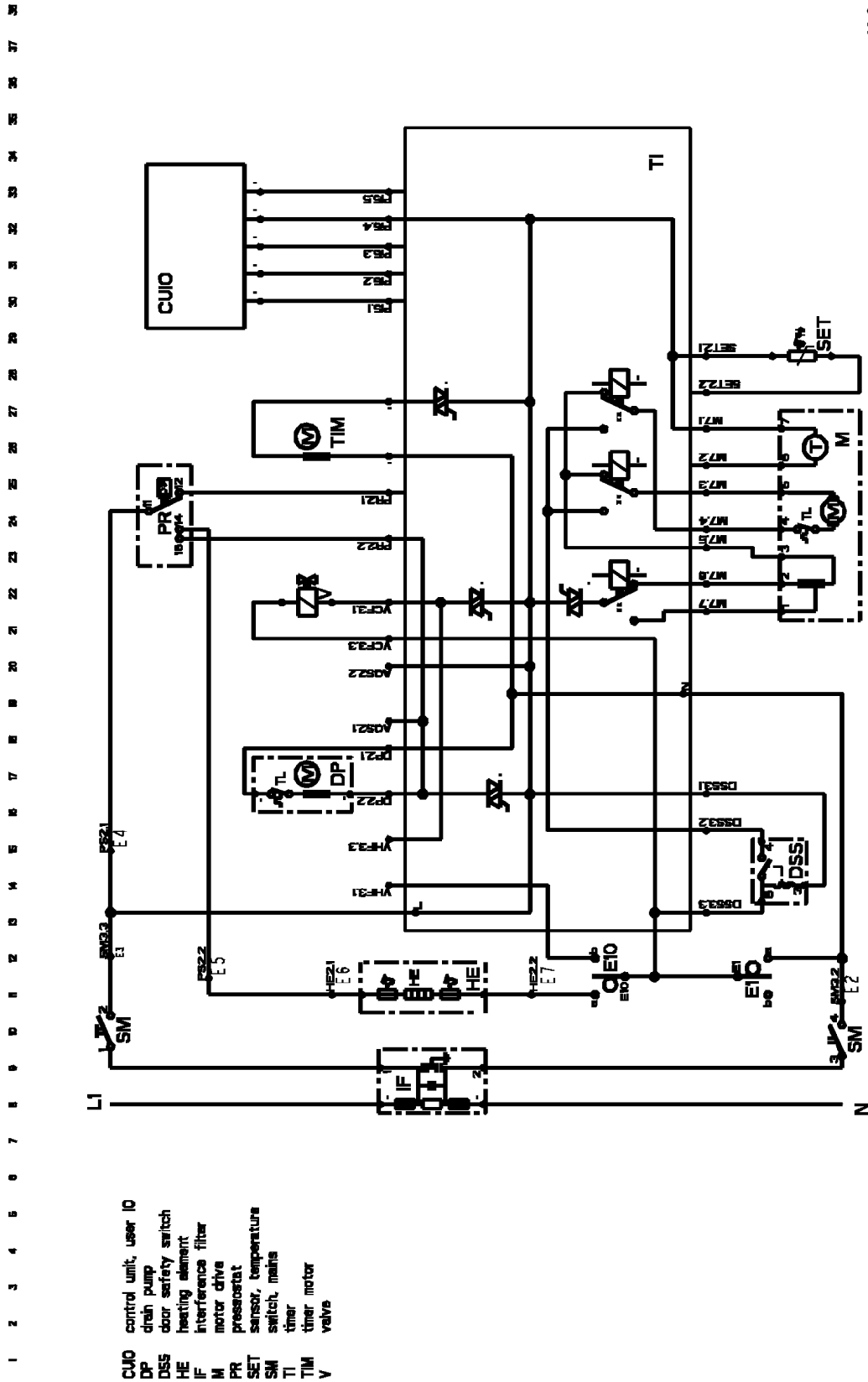
Anschlußplan



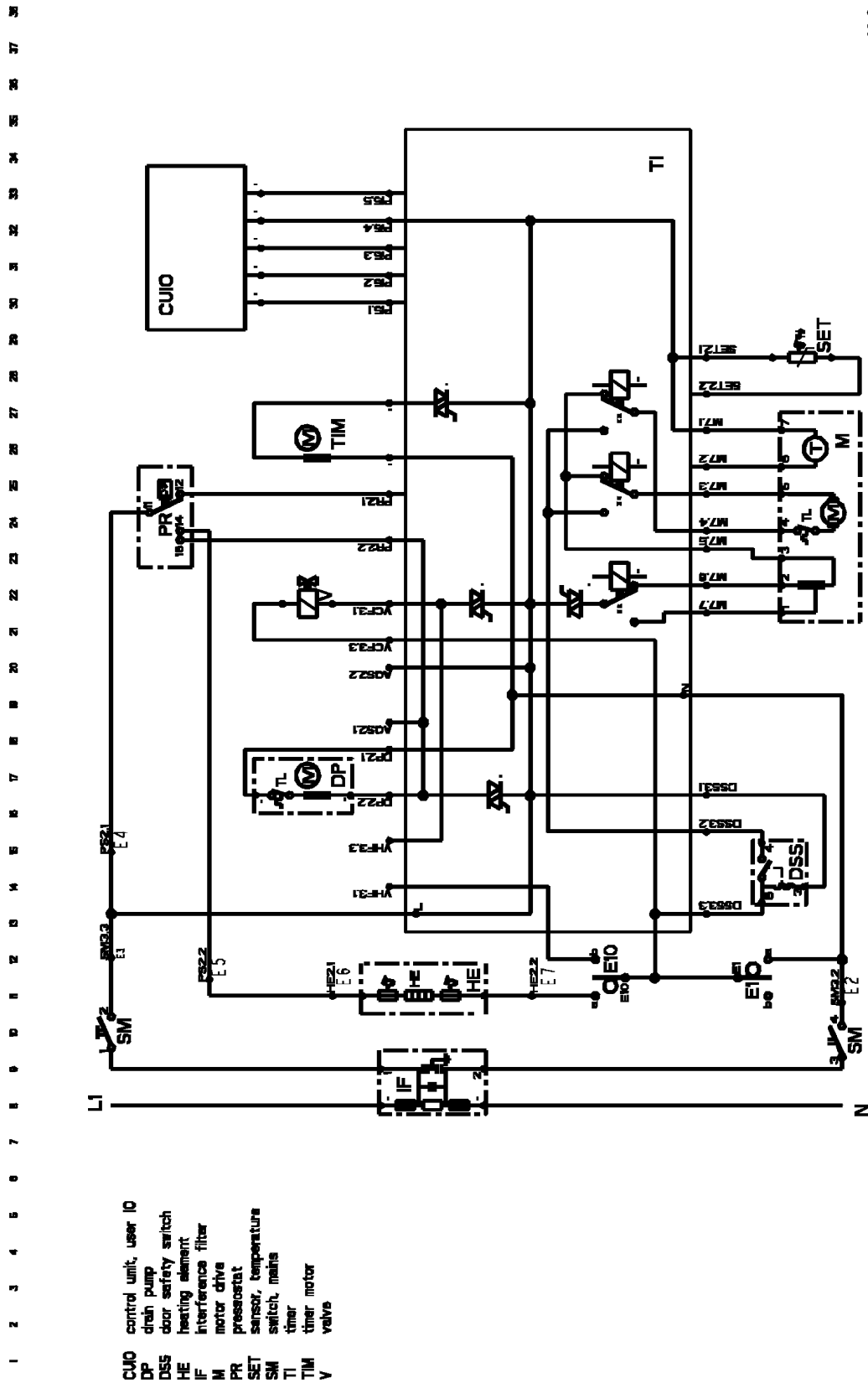
- | | |
|----|--------------|
| 00 | black |
| 11 | brown |
| 22 | red |
| 33 | orange |
| 44 | yellow |
| 55 | green |
| 66 | blue |
| 77 | violet |
| 88 | grey |
| 99 | white |
| 45 | yellow/green |

4619 744 43101

Stromlaufplan



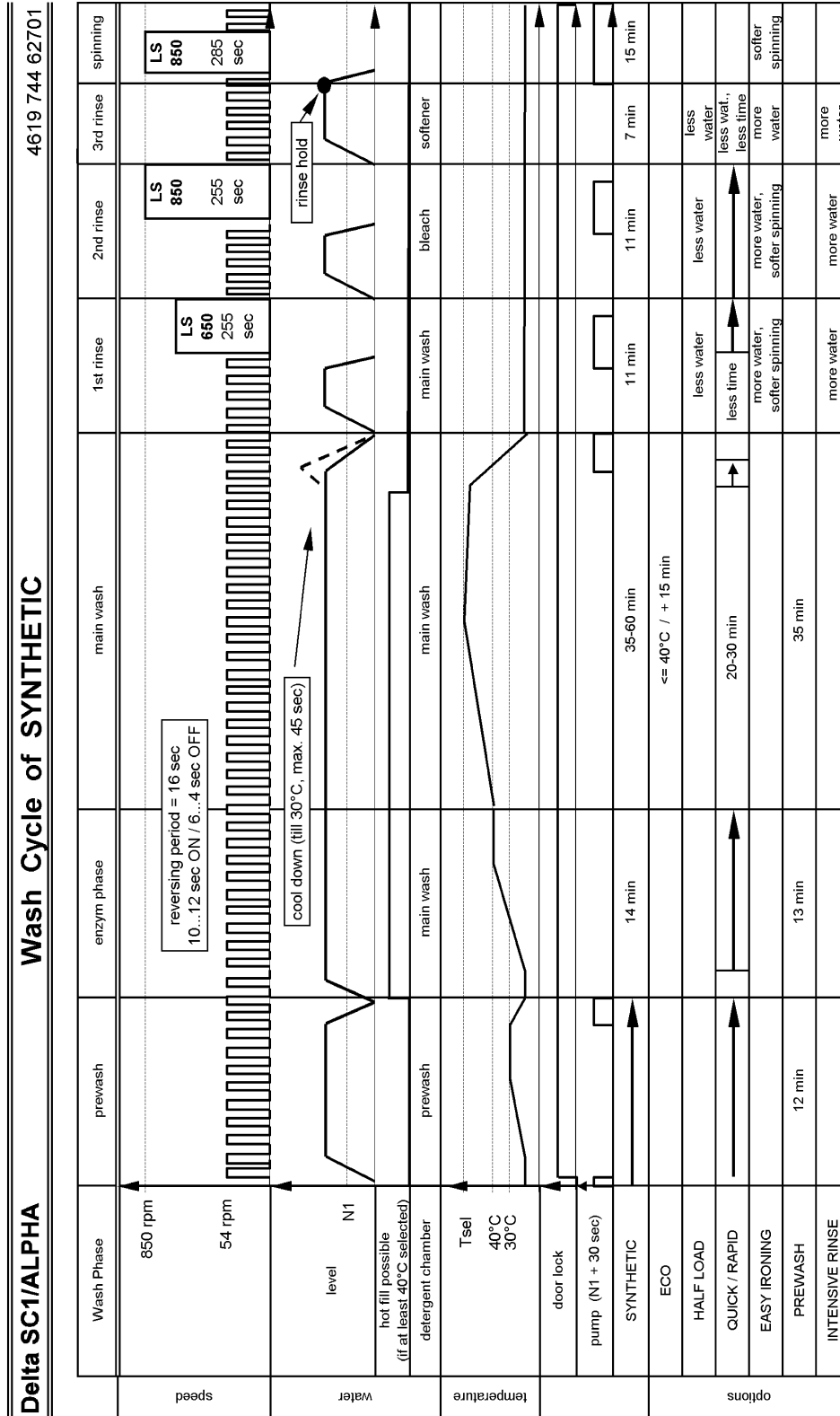
Stromlaufplan



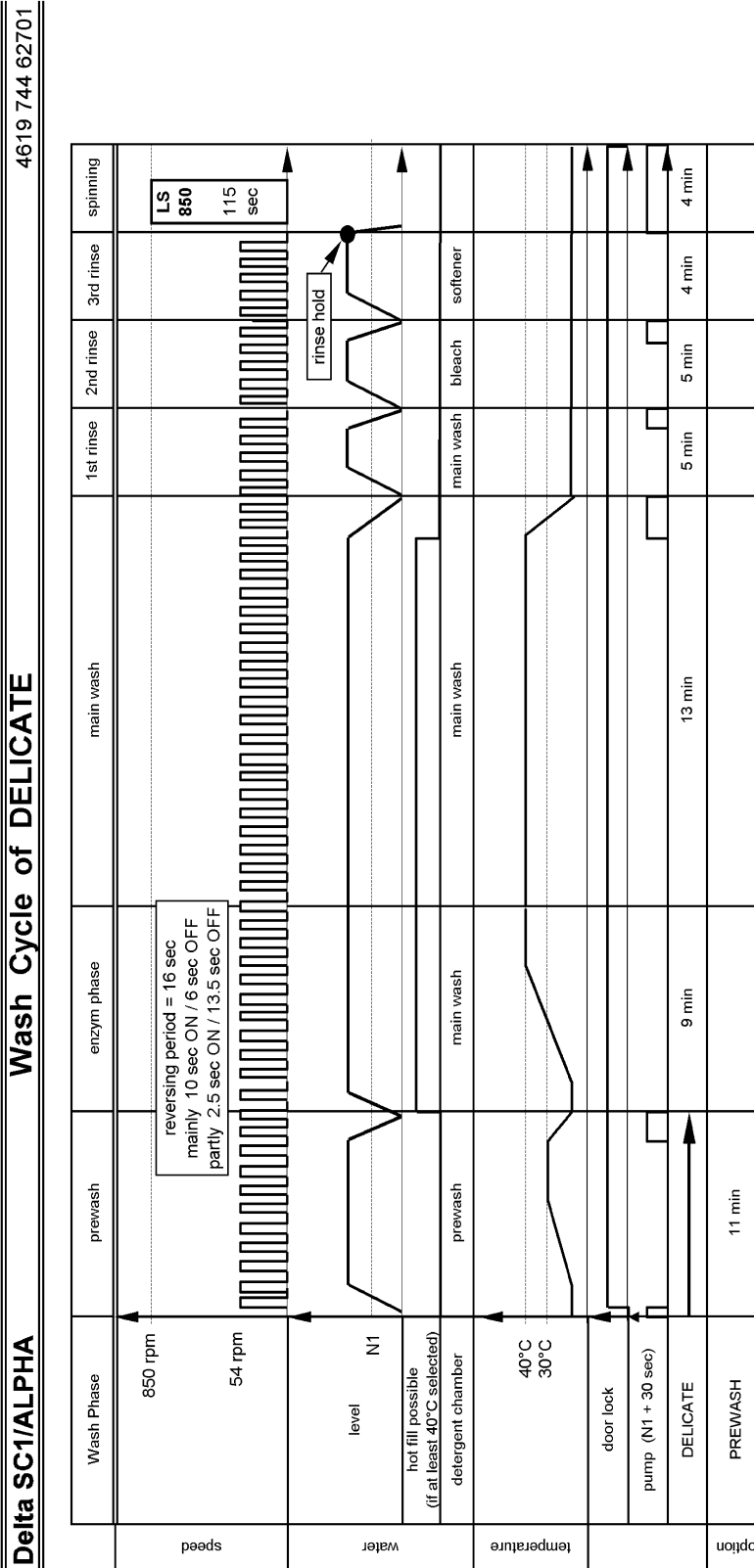
4618 744 43101

- 1 CUJO control unit, user IO
- 2 DP drain pump
- 3 DSS door safety switch
- 4 HE heating element
- 5 IF interference filter
- 6 M motor drive
- 7 PR pressostat
- 8 SET sensor, temperature
- 9 SM switch, mains
- 10 TI timer
- 11 TIM timer motor
- 12 V valve

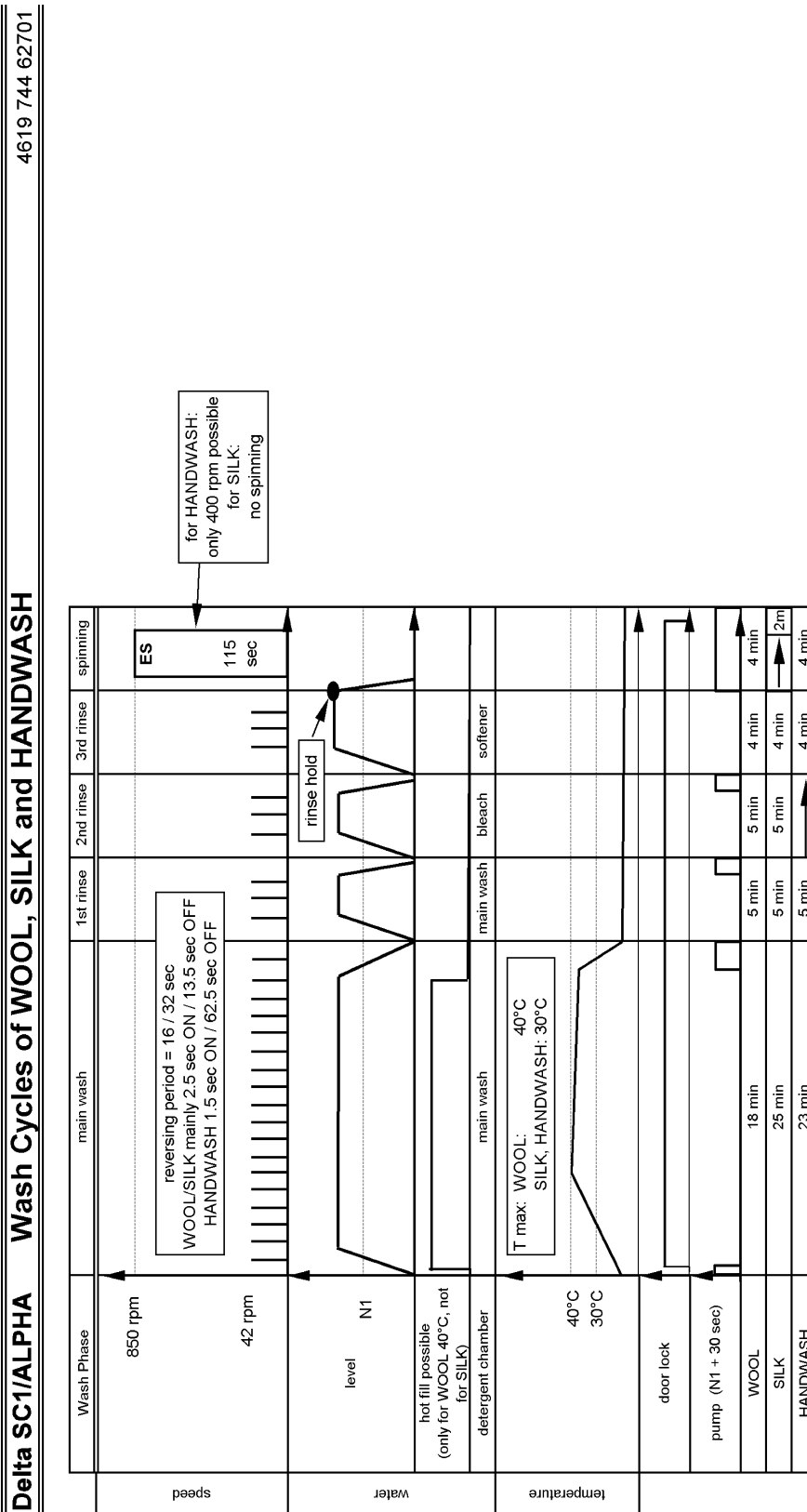
Programmablaufplan



Programmablaufplan



Programmablaufplan

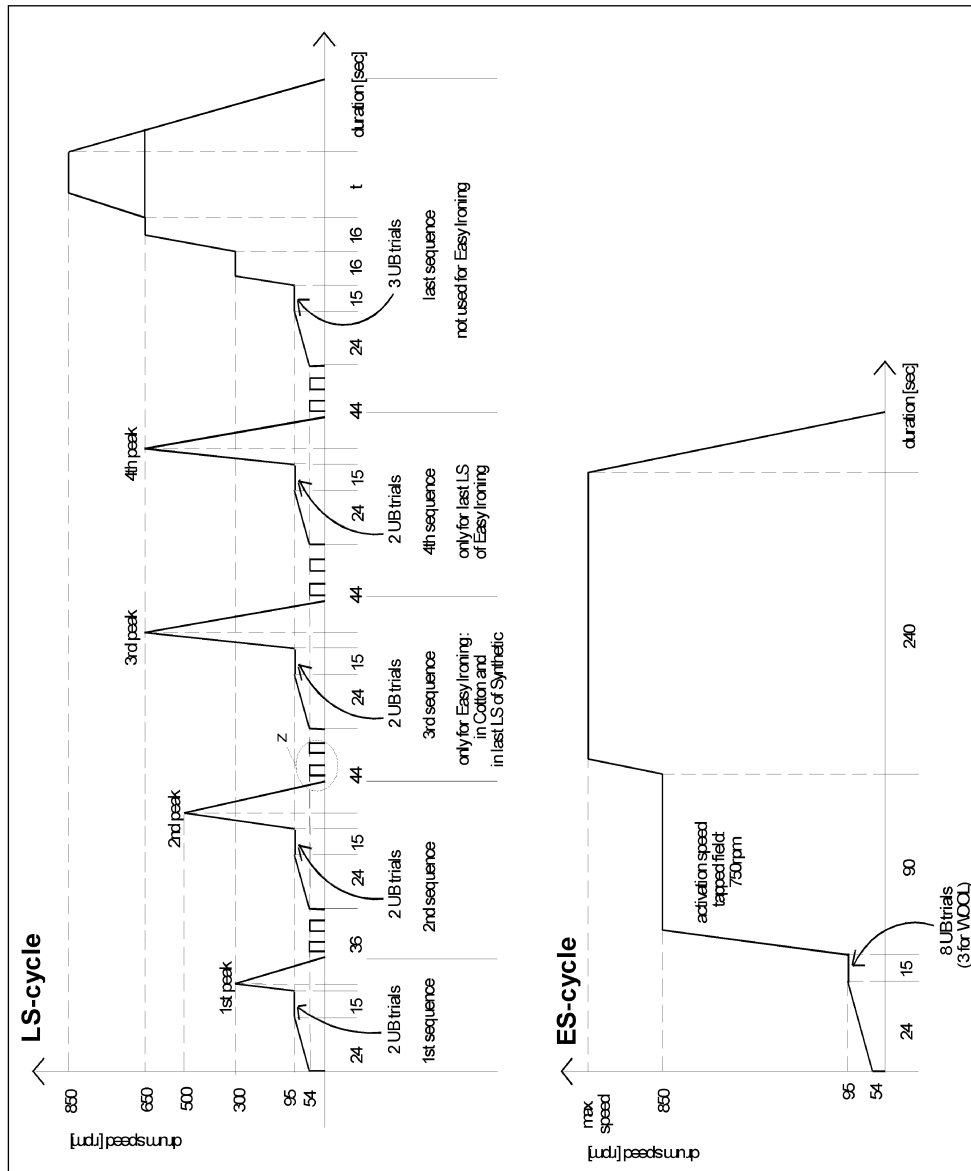


Programmablaufplan

4619 744 62701

Spinning Profiles

Delta SC1/ALPHA

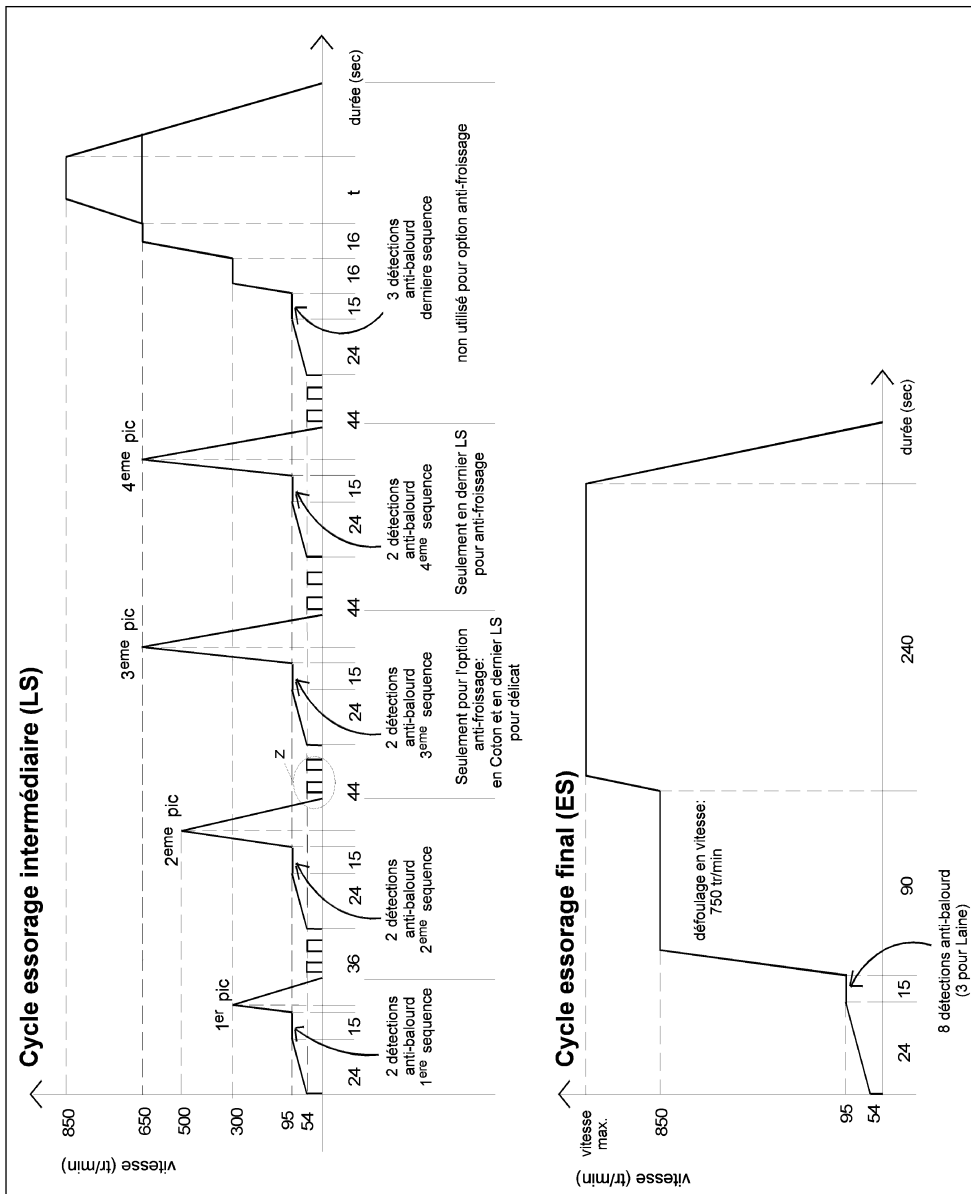


Programmablaufplan

4619 744 62701

PROFIL TYPE DE L'ESSORAGE

Delta SC1



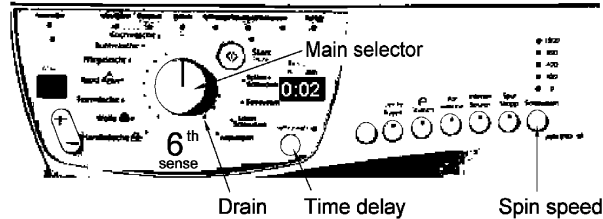
Text /Legende

Whirlpool SC1 VBL Version A and B test flow

1. **Attention : Use test program without laundry !!**

2. **Selecting the program :**

Select the Drain program by turning the main selector. Wait until the display shows 0:02 and till the pump has stopped

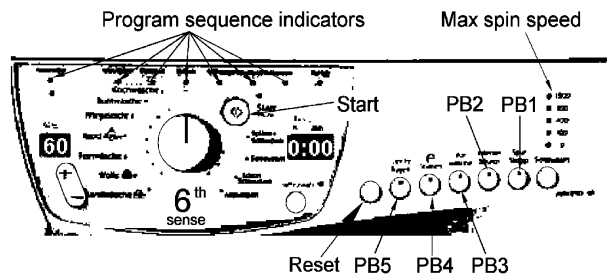


3. **Start of test program :**

Press PB1 twice, then PB2 twice and then the start button.

Indication of entering the test program:

- temperature display = 60°C
- start delay LED = ON
- speed LED max = ON
- LED of PB1 and PB2 = ON
- if available:
- LED aquastop = ON
- LED water tap = ON
- LED pump filter = ON
- LED door lock = ON



during the hole testprocedure until Reset is pushed.

4. **Stopping the test program :**

Stop by moving the main selector into any other position.
- note - no stop of test program by main interruption.

Testprogram for Whirlpool SC 1 timer VBL version A or B (Central program selector).

| Position of timer | Program sequence LED's | | | | | | Detergent box | Inlet / Outlet | Max temp. | Duration (" = sec) (' = min) | Movement of drum | Advance condition | Advance by option button (Press slowly 2 times) | Checking | |
|-------------------|------------------------|-----------|-------|------------|----------|-----------|---------------|----------------|-----------|------------------------------|------------------|--------------------------|---|---------------------------------|--|
| | Pre-wash | Main-wash | Rinse | Rinse hold | Spinning | | | | | | | | | | |
| - | X | X | X | X | X | - | | | | | no movement | | PB3 | PB1, PB2 | |
| 6 | X | X | X | X | X | pre wash | fill | | 60" | | no movement | | PB3 | PB3 | |
| 8 | | | | | | main wash | (hot) fill | hot fill | 60" | | no movement | | PB4 **, PB1 | PB4, mainwash fill, hot fill N1 | |
| 16 | | X | X | X | | | fill | | | 6' | | gentle wash | N1 | | |
| 18 | | | | | | | fill | | | | | gentle wash | 60" | PB1 | |
| 20 | | | | | | | (fill) | 90°C | 55' | | gentle wash | till 90°C - time unknown | PB1 | heating, NTC leakage | |
| 23 | | | X | X | X | bleach * | fill | | | | turns right | 3" | | | |
| 27 | | | | | | softener | fill | | | | turns left | 60" | PB5 ** or PB1 | PB5, bleach fill | |
| 28 | | | | X | X | - | pump | | 6' | | gentle wash | N1 | PB1 | softener fill | |
| 29 | | | | | X | - | pump | | | | 0 - 95 rpm | 4", N1 | | pump | |
| | | | | | | - | pump | | | | select. Speed | 300", N1 | PB1 | motor - spinning | |
| 5 | | | | | | - | | | | | no movement | ∞ | | | |

** if PB4 / PB5 are present they must be used to advance to next step - if not present - use PB1 instead.

* 4 chamber detergent dispenser "bleach compartment"
3 chamber detergent dispenser "main wash" compartment

Reaction to failure:

Timer SC1 goes into safety routine

- drain to level 1+30 sec. (time out for draining = 6 minutes)
- stop motor (relais in safety position)
- stop valve
- go out of heating step, if time out is reached
- Start is flashing

4619 712 54471-EBL

Text /Legende

Table of failures:

| Failure Identifier | Indication | Detected failure | To be checked |
|--------------------|------------|---|---|
| 0 | F00 | Pump triac failure | Control unit |
| 1 | FH | No water inlet | Water Tap / Valve / Flowmeter / Pressostat |
| 2 | FA | Aquastop failure | Aquastop switch |
| 3 | FP | Drain failure | Drain pump / Pressostat |
| 4 | | Not active | |
| 5 | F05 | NTC failure (SC / OC) | NTC |
| 6 | F06 | Tachometer failure (no motor movement detected) | Motor / Tachometer |
| 7 | F07 | Triac short circuit detection | Control unit, Motor |
| 8 | | Not active | |
| 9 | F09 | Overflow failure | Pressostat |
| 10 | | Not active | |
| 11 | F11 | Communication failure | Control unit, I2C bus |
| 12 | | Not active | |
| 13 | | Not active | |
| 14 | F14 | EEPROM failure | Control unit |
| 15 | | Not active | |
| 16 | F16 | Control failure | Control unit |
| 17 | | Not active | |
| 18 | F18 | Control failure | Control unit |
| 19 | F19 | Mains power failure | Power |
| 20 | F20 | Control failure | Control unit |
| 21 | F21 | Control failure | Control unit |

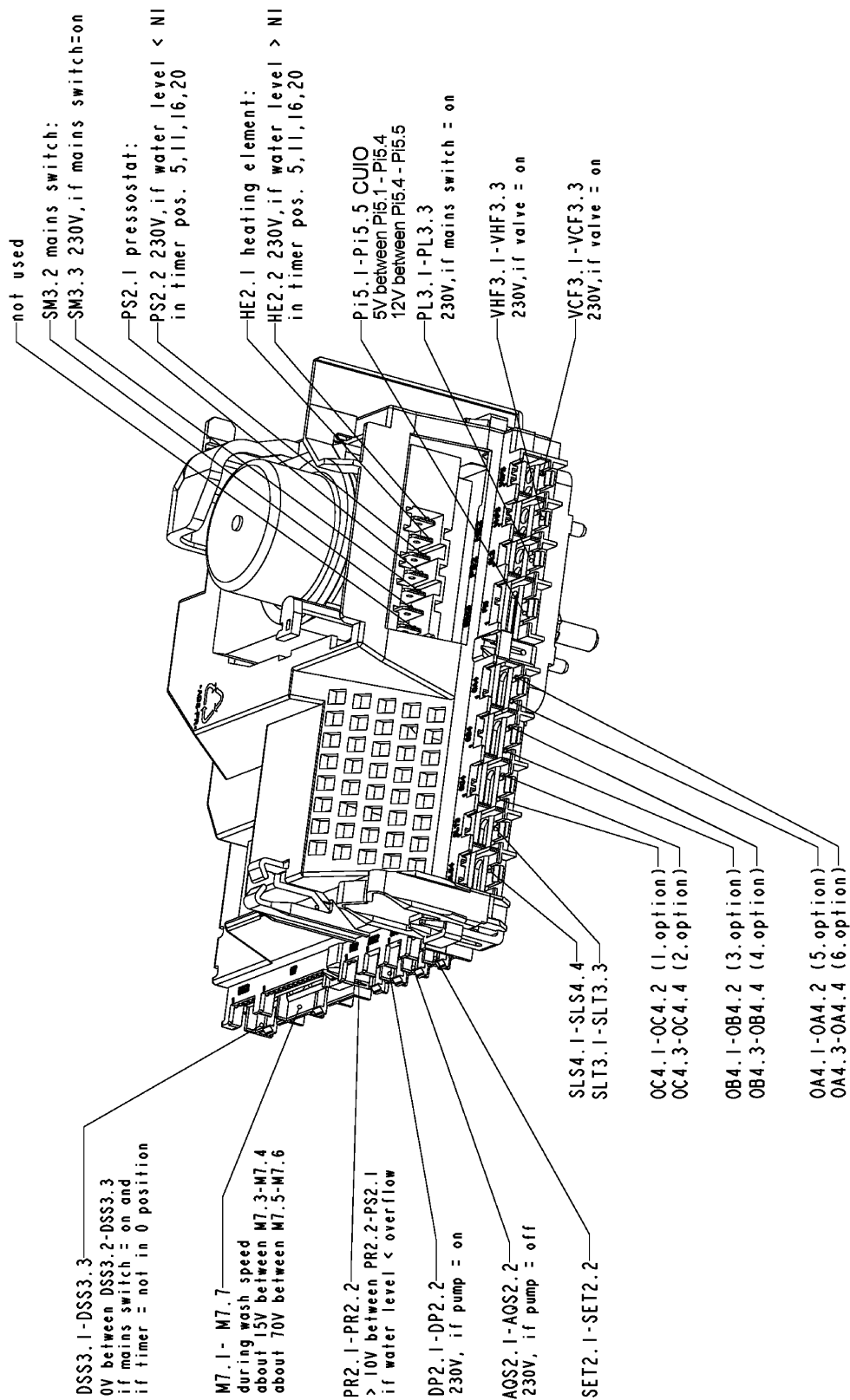
Display of failures on the speed leds (flashing):

| Errors | 0 | 1 | 2 | 3 | 4 | 5 | 6 | 7 | 8 | 9 | 10 | 11 | 12 | 13 | 14 | 15 |
|------------|------|-----|-----|-----|-----|-----|-----|-----|-----|-----|------|------|------|------|------|------|
| | F:00 | F:H | F:A | F:P | F:4 | F:5 | F:6 | F:7 | F:8 | F:9 | F:10 | F:11 | F:12 | F:13 | F:14 | F:15 |
| Speed Leds | ○ | ○ | ○ | ○ | ○ | ○ | ○ | ○ | ○ | ○ | ○ | ○ | ○ | ○ | ○ | ○ |
| | ○ | ○ | ○ | ○ | ○ | ○ | ○ | ○ | ○ | ● | ○ | ○ | ○ | ○ | ○ | ○ |
| | ○ | ○ | ○ | ○ | ○ | ● | ● | ● | ○ | ○ | ○ | ○ | ○ | ○ | ○ | ○ |
| | ○ | ○ | ● | ● | ○ | ○ | ● | ● | ○ | ○ | ○ | ○ | ○ | ○ | ○ | ○ |
| | ○ | ● | ○ | ● | ○ | ● | ○ | ● | ○ | ● | ○ | ○ | ○ | ○ | ○ | ○ |

| Errors | 16 | 17 | 18 | 19 | 20 | 21 |
|------------|------|------|------|------|------|------|
| | F:16 | F:17 | F:18 | F:19 | F:20 | F:21 |
| Speed Leds | ● | ○ | ● | ● | ● | ● |
| | ○ | ○ | ○ | ○ | ○ | ○ |
| | ○ | ○ | ○ | ○ | ○ | ○ |
| | ○ | ○ | ○ | ○ | ○ | ○ |
| | ○ | ○ | ○ | ○ | ○ | ○ |

4619 712 54471-EBL

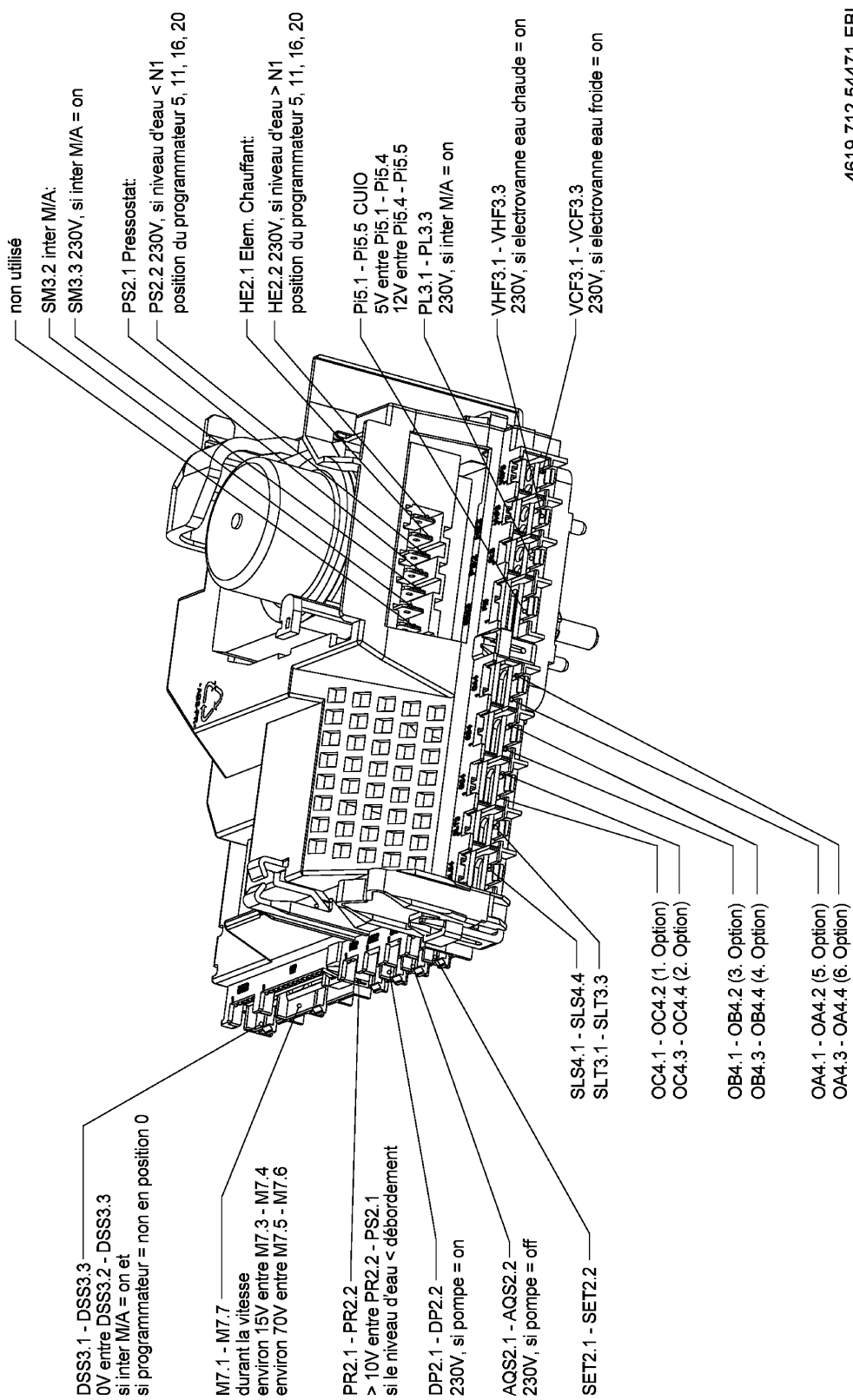
Text /Legende



4619 712 54471-EBL

Text /Legende

Programmeur SC1 - Version A et B



4619 712 54471-EBL