



Philips Domestic Appliances and Personal Care

# Service Manual

## PRODUCT INFORMATION

### Features

Iron, Azur

- Careeza soleplate
- Max. steam output 60 g/min
- Cord length 1.9 m

### Boiler

- Inox boiler
- Capacity 1 litre

## TECHNICAL INFORMATION

Voltage : 220 - 240 V

Frequency : 50 - 60 Hz

Power consumption : Iron : 800 W  
Boiler : 1200 W  
Pressure : 2.5 bar

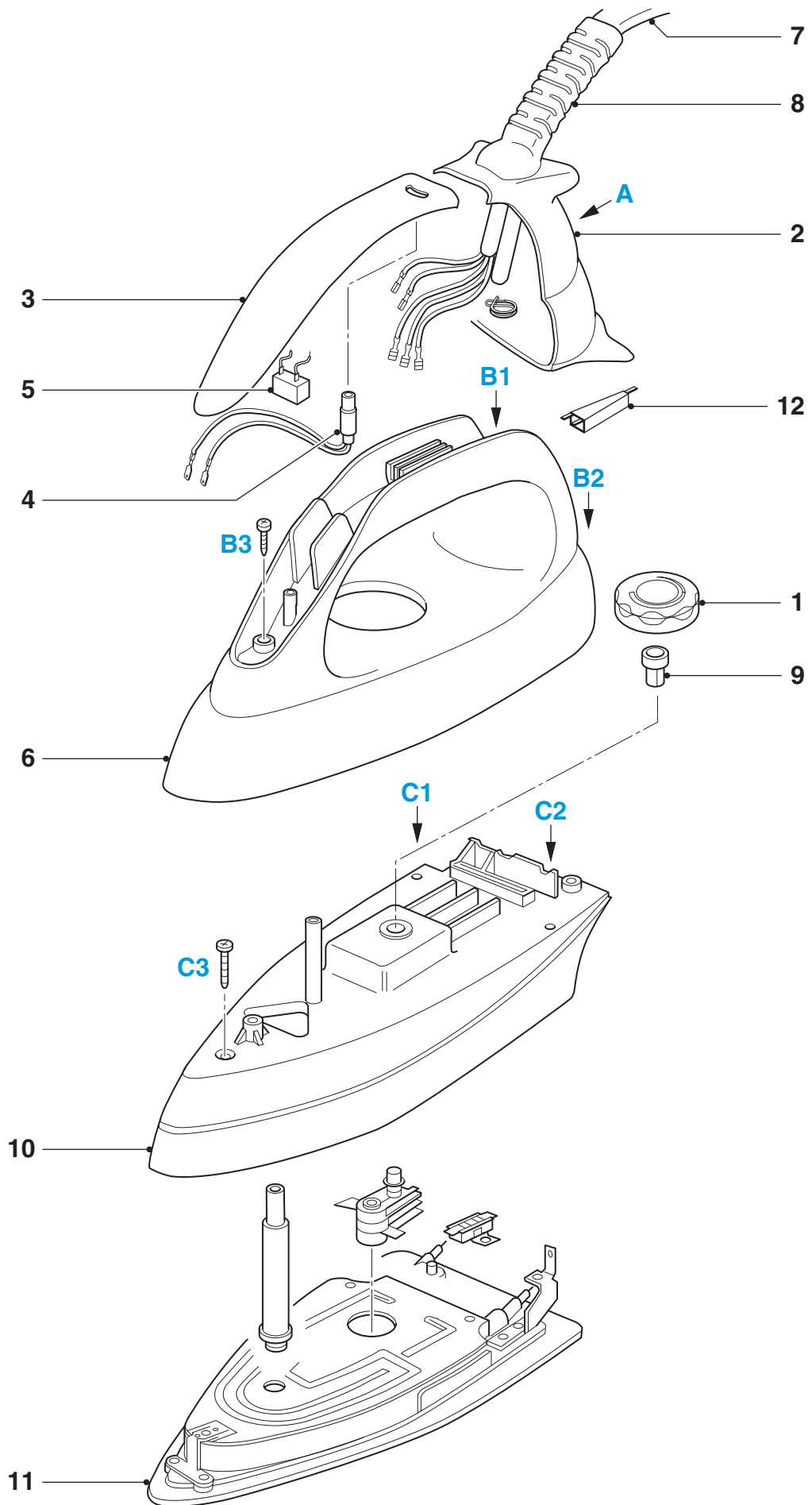
Water advice : Suitable for tap water use. However if the tap water in your area is very hard, we advise you to mix it with a equal portion of distilled water or to use distilled water only.

### Soleplate

Careeza is a multi layer chemical substance that gives an excellent gliding over various fabrics and better care for the garments.

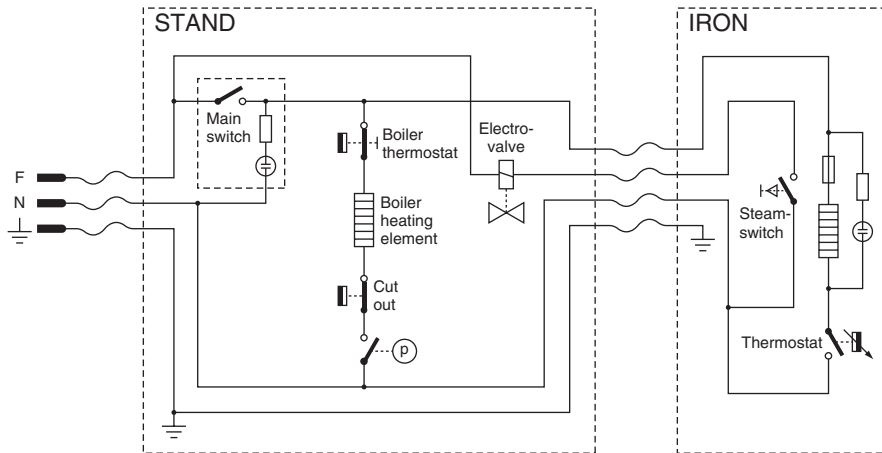
This product meets the requirement regarding interference suppression on radio and television.

EXPLODED VIEW IRON



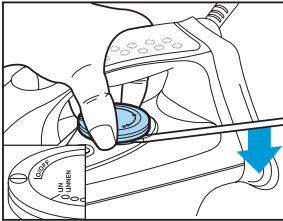
## PARTS LIST IRON

| Pos | Description                      | Service code   |
|-----|----------------------------------|----------------|
| 1   | Dial                             | 9965 000 13233 |
| 2   | Backplate                        | 9965 000 13234 |
| 3   | Inlay                            | 9965 000 13235 |
| 4   | Iron Lamp                        | 9965 000 01686 |
| 5   | Micro switch                     | 9965 000 01888 |
| 6   | Iron Handle                      | 9965 000 13236 |
| 7   | Intermediate cable + microswitch | 9965 000 13237 |
| 8   | Swivel                           | 9965 000 13238 |
| 9   | Thermostat bush                  | 9965 000 01682 |
| 10  | Iron skirt                       | 9965 000 13245 |
| 11  | Soleplate unit + skirt           | 4239 022 55010 |
| 12  | Electrovalve trigger             | 9965 000 13255 |



## DISASSEMBLY ADVISE IRON

### REPLACE DIAL 1



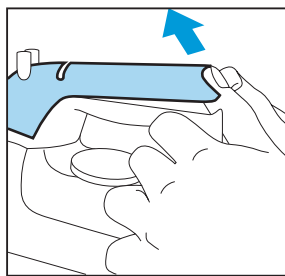
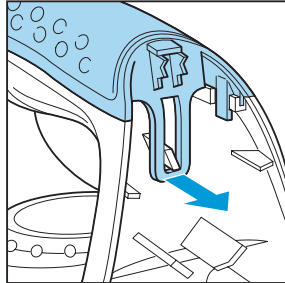
### REPLACE BACKPLATE 2

disassemble **DIAL 1**  
remove **screw A**  
remove **connection**  
remove **hose**

### REPLACE INLAY 3

### IRON LAMP 4

### MICRO SWITCH 5



### REPLACE IRON HANDLE 6

disassemble **DIAL 1**  
remove **screw A**  
remove **connection**  
remove **hose**  
disassemble **BACKPLATE 2**  
disassemble **INLAY 3**  
**IRON LAMP 4**  
**MICRO SWITCH 5**  
remove **screw B (3x)**

### REPLACE INTERMEDIATE CABLE 7

### SWIVEL 8

### THERMOSTAT BUSH 9

disassemble **DIAL 1**  
remove **screw A**  
remove **connection**  
remove **hose**  
disassemble **BACKPLATE 2**  
disassemble **INLAY 3**  
**IRON LAMP 4**  
**MICRO SWITCH 5**  
remove **screw B (3x)**  
disassemble **IRON HANDLE 6**

### REPLACE IRON SKIRT 10

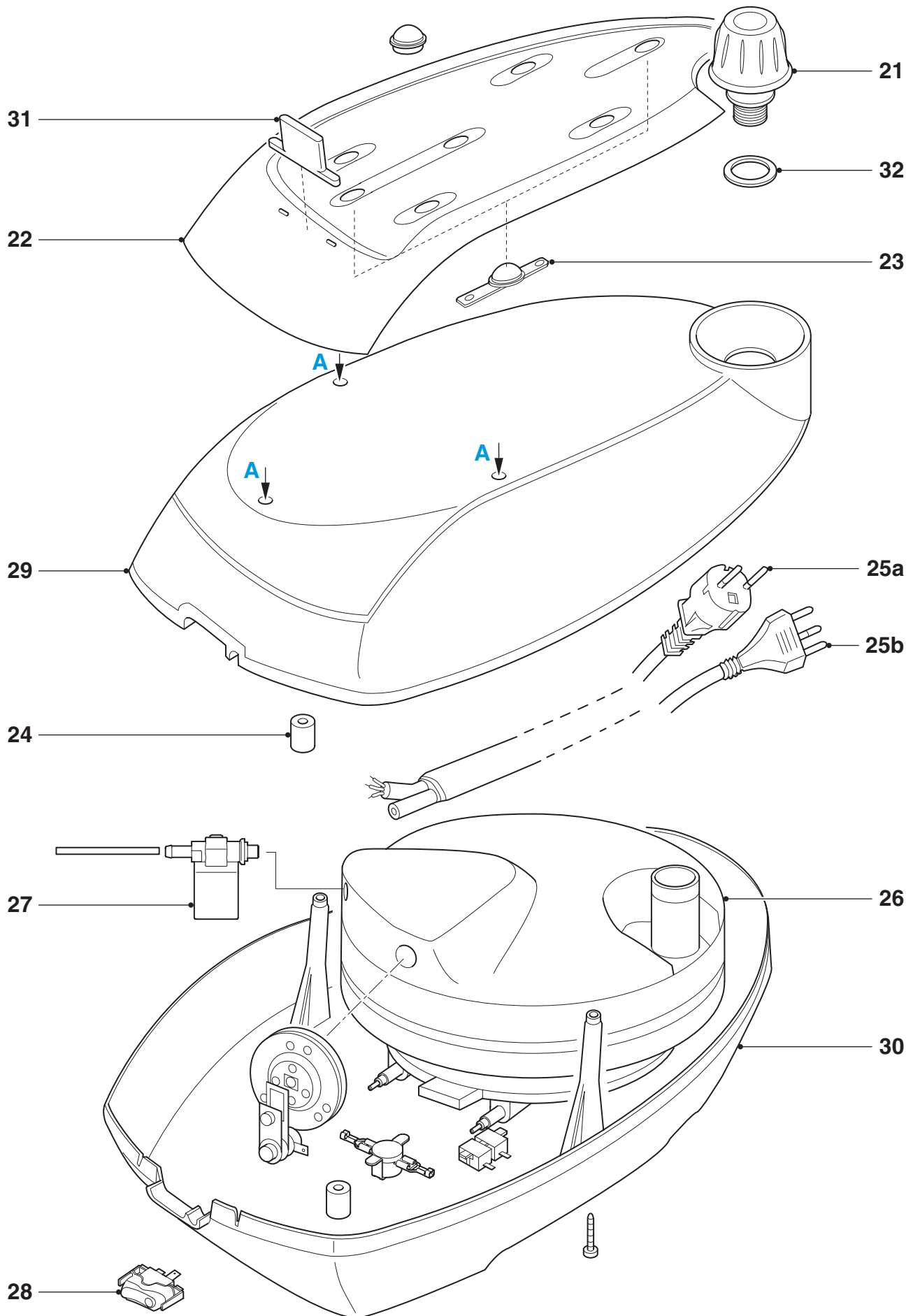
### SOLEPLATE UNIT 11

disassemble **DIAL 1**  
remove **screw A**  
remove **connection**  
remove **hose**  
disassemble **BACKPLATE 2**  
disassemble **INLAY 3**  
**IRON LAMP 4**  
**MICRO SWITCH 5**  
remove **screw B (3x)**  
disassemble **IRON HANDLE 6**  
disassemble **INTERMEDIATE CABLE 7**  
**SWIVEL 8**  
**THERMOSTAT BUSH 9**  
remove **screw C (3x)**

#### Notes :

For disassembly you will need a Torx screwdriver 362 TR T20 x 100.

EXPLODED VIEW STAND



## PARTS LIST + DISASSEMBLY ADVICE STAND

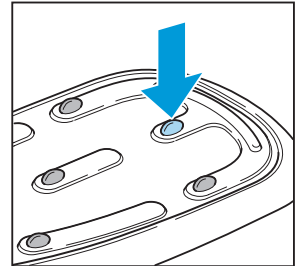
| Pos | Description                            | Service code   |
|-----|--|----------------|
| 21  | Safety cap                             | 9965 000 13247 |
| 22  | Complete tray                          | 9965 000 13248 |
| 23  | Tray rubber foot                       | 9965 000 13249 |
| 24  | Boiler rubber foot                     | 4822 462 71999 |
| 25a | Intermediate supply cable (Europe)     | 9965 000 01793 |
| 25b | Intermediate supply cable (Italy)      | 9965 000 01792 |
| 26  | Inox boiler unit                       | 9965 000 13250 |
| 27  | Electrovalve                           | 4822 218 11561 |
| 28  | Main switch                            | 9965 000 13251 |
| 29  | Superior stand printed GC 6022         | 9965 000 13257 |
| 30  | Inferior stand                         | 9965 000 13258 |
| 31  | Tray stopper prevent Iron from sliding | 9965 000 13254 |
| 32  | Filling hole gasket                    | 9965 000 01782 |

### ADJUSTMENT AND CONTROLS

- To avoid leakage of the sealings and damage to the components in and on the boiler, **NEVER** clean the boiler with vinegar, a descaling agent or other chemicals.
- The boiler doesn't contain serviceable parts. **Never disassemble the boiler body or components and/or components on and in the boiler.**
- The boiler is required to be rinsed after every ten times use.
- **ALWAYS REPLACE BOILER (Pos 26) WHEN:**
  - \* the mechanical safety valve has been activated.
  - \* the boiler thermostat or hand –resettable safety thermostat are open.
  - \* the electrovalve fails or the sieve is soiled with scale.
- **After the product has been repaired, it should function properly and has to meet the safety requirements as laid down and officially established at this moment.**

### SAFETY CAP 21

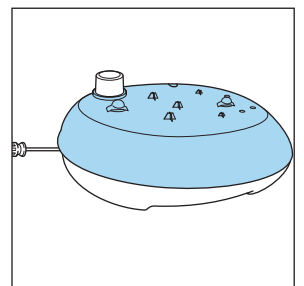
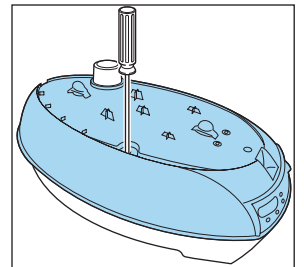
### COMPLETE TRAY 22



Note: pressure fixation rubber through the tray.

### SUPERIOR STAND PRINTED 29

Remove screws **A (4x)**



Remove the SUPERIOR STAND and you will see the respective parts of the Boiler.