

Service
Service
Service



Philips Consumer Lifestyle

Service Manual

PRODUCT INFORMATION

Features

Iron

- Careeza soleplate
- Max steam output 95 grams/min
- Shot of steam (SOS)
- Cord length 1.9 m

Boiler

- Inox boiler
- Capacity 1 litre
- Stainless steel tray assy
- Ergonomic backrest
- Vario steam
- Steam ready light indicator
- Anti-scaling funnel

Safety Information

- This product meets the requirements regarding interference suppression on radio and TV.
- After the product has been repaired, it should function properly and has to meet the safety requirements as officially laid down at this moment.

TECHNICAL INFORMATION

Voltage : 220 - 240 V

Frequency : 50 - 60 Hz

Power consumption : Iron : 800 W
Boiler : 1200 W
Pressure : 4.0 bar

Dimension (F-box) : 41 x 38 x 20 cm

Weight : 3850 grams

Water advice : Suitable for tap water use. However if the tap water in your area is very hard, we advise you to mix it with a equal portion of distilled water or to use distilled water only.

Soleplate

Careeza is a multi layer chemical substance that gives an excellent gliding over various fabrics and better care for the garments.

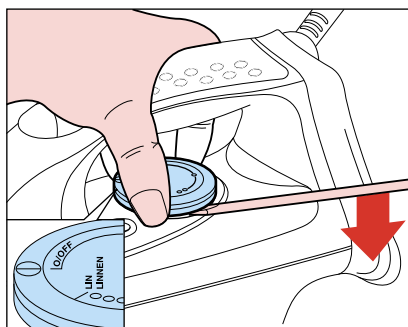
Vario steam

The vario steam function allows user to have control over the steam rate and this prevent over moisturising the cloth.

Anti calc

The anti calc is integrated in the funnel and softens the water that goes into the boiler.

REPLACE DIAL 1



REPLACE BACKPLATE 2

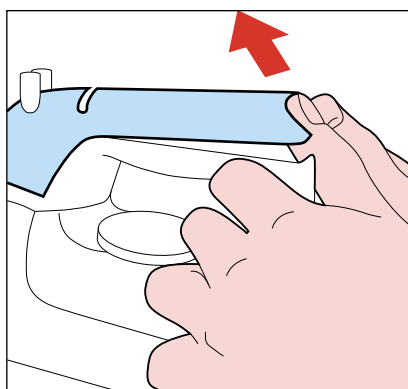
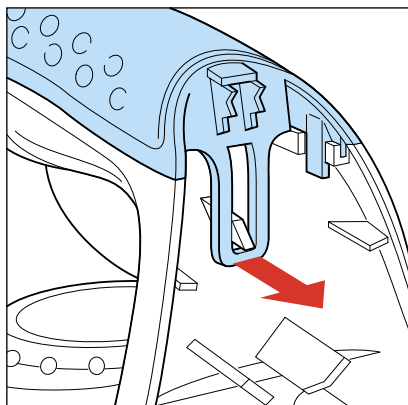
disassemble DIAL 1
 remove screw A
 remove connection
 remove hose

REPLACE INLAY 3

STEAM KNOB 4

IRON LAMP 5

MICRO SWITCH 6



REPLACE IRON HANDLE 7

disassemble DIAL 1
 remove screw A
 remove connection
 remove hose
 disassemble BACKPLATE 2
 disassemble INLAY 3
 STEAM KNOB 4
 IRON LAMP 5
 MICRO SWITCH 6
 remove screw B (3x)

REPLACE
INTERMEDIATE CABLE 8

SWIVEL 9

DEVIATOR ASSY 10

THERMOSTAT BUSH 11

disassemble DIAL 1
 remove screw A
 remove connection
 remove hose
 disassemble BACKPLATE 2
 disassemble INLAY 3
 STEAM KNOB 4
 IRON LAMP 5
 MICRO SWITCH 6
 remove screw B (3x)
 disassemble IRON HANDLE 7

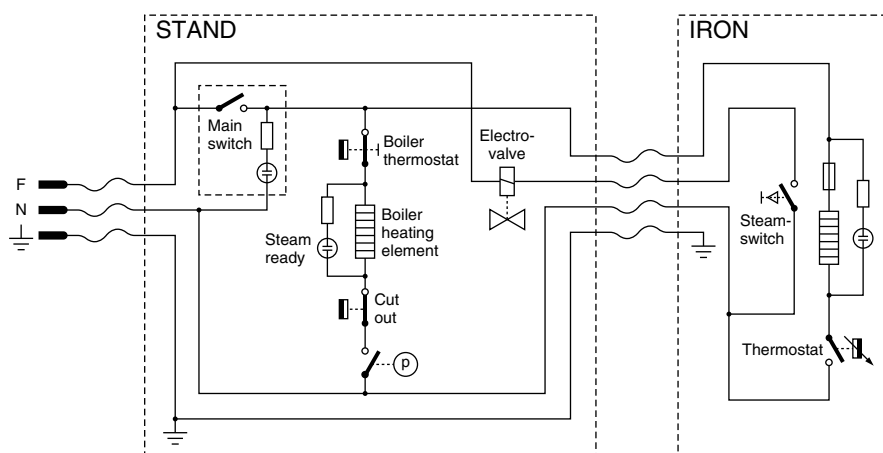
REPLACE IRON SKIRT 12

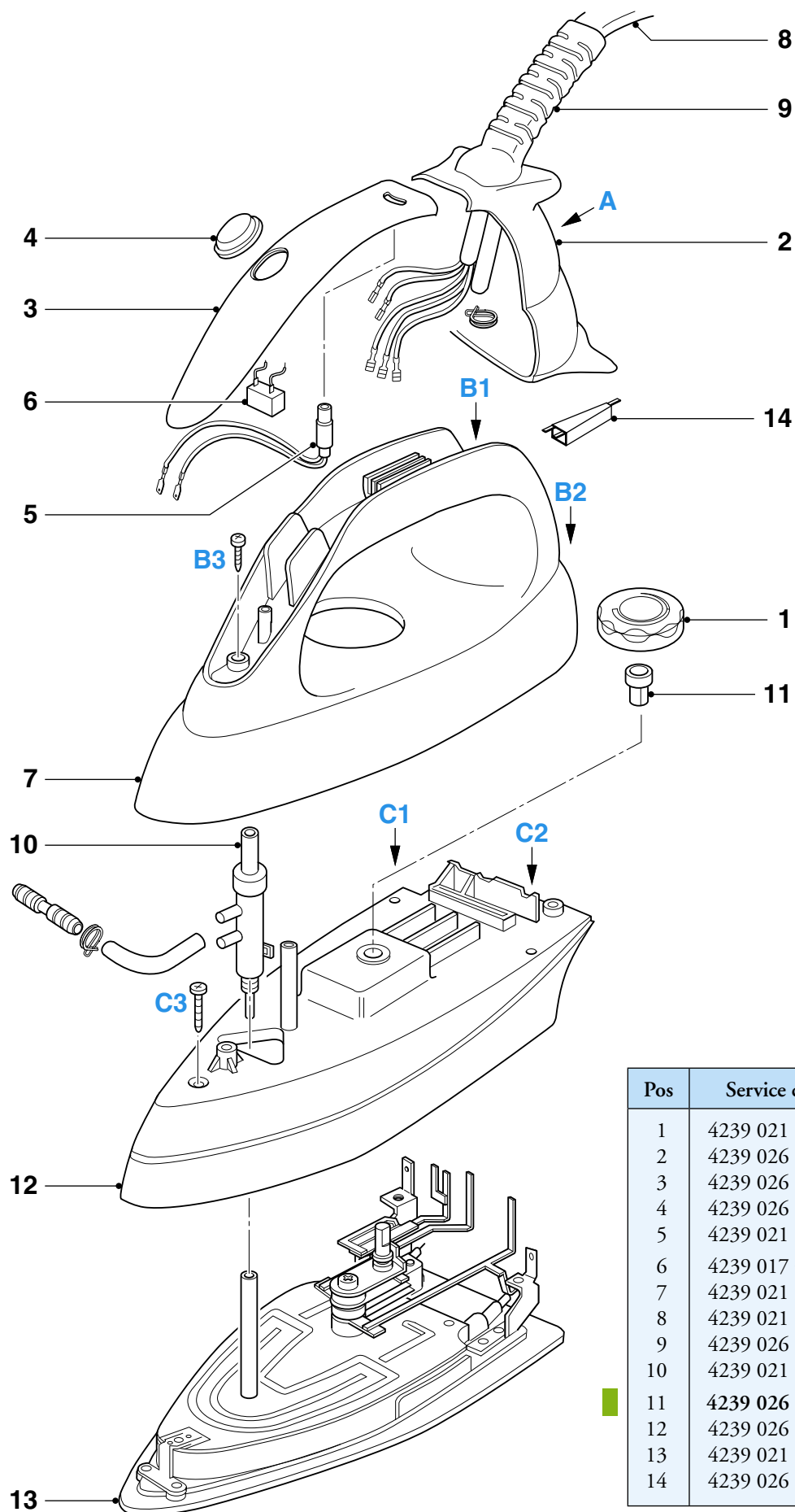
SOLEPLATE UNIT 13


disassemble DIAL 1
 remove screw A
 remove connection
 remove hose
 disassemble BACKPLATE 2
 disassemble INLAY 3
 STEAM KNOB 4
 IRON LAMP 5
 MICRO SWITCH 6
 remove screw B (3x)
 disassemble IRON HANDLE 7
 disassemble INTERMEDIATE
 CABLE 8
 SWIVEL 9
 DEVIATOR ASSY 10
 THERMOSTAT
 BUSH 11
 remove screw C (3x)

REPAIR INSTRUCTIONS - IRON

- For disassembly, you will need a Torx screwdriver: 362 TR T20 x 100



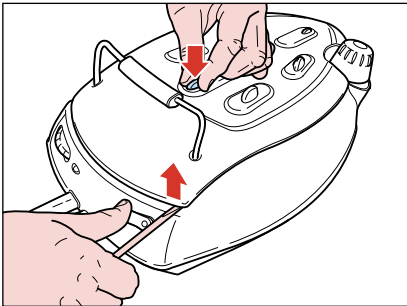


 = changed

Pos	Service code	Description
1	4239 021 19670	Dial
2	4239 026 15690	Backplate
3	4239 026 15680	Inlay
4	4239 026 15670	Jet of steam knob
5	4239 021 19630	Iron Lamp
6	4239 017 08950	Micro switch
7	4239 021 19660	Iron Handle
8	4239 021 19570	Intermediate Cord
9	4239 026 15580	Swivel
10	4239 021 19620	Steam deviator assy
11	4239 026 13220	Thermostat bush
12	4239 026 15620	Iron skirt
13	4239 021 19510	Soleplate unit
14	4239 026 15650	Electrovalve trigger

SAFETY CAP 21

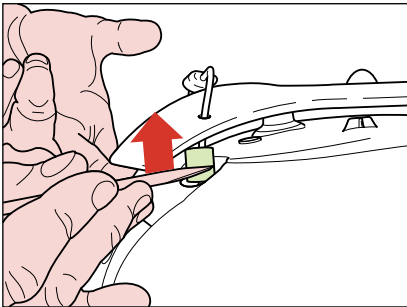
COMPLETE TRAY 22



Press tray anchorage rubber 23 through the tray

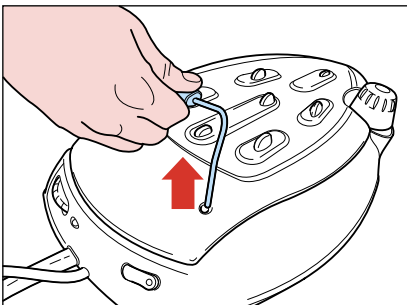
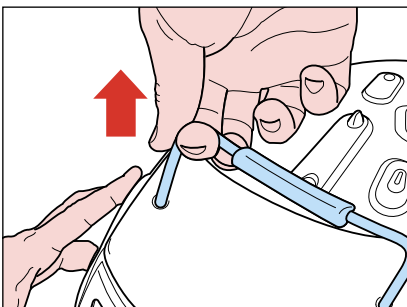
BACK REST ASSY 34

HOSE CLAMP 35



With tray lifted, use a screw driver to upwardly unplug hose clamps at the foot of back rest.

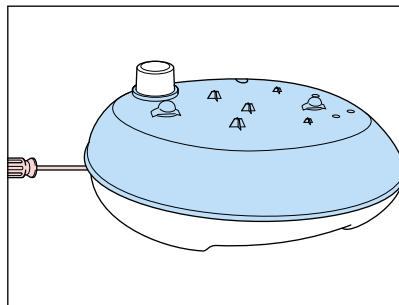
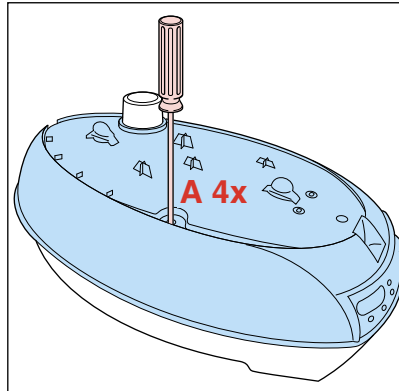
Note: Hose clamps **MUST BE** unplugged before back rest can be removed.



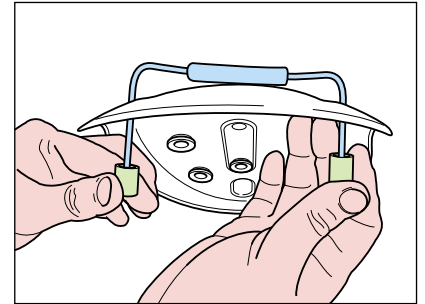
When both hose clamps are unplugged, remove back rest by pulling one leg first, then the other leg.

SUPERIOR STAND
PRINTED 32

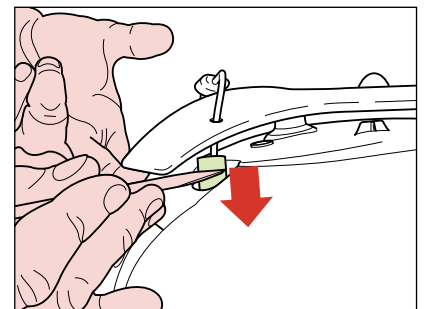
Remove screws A (4x)



Remove the SUPERIOR STAND and you will see the respective parts of the Boiler.

REASSEMBLY
COMPLETE TRAY 22

Insert back rest through the complete tray, hose clamps added to the legs of the back rest as shown above.

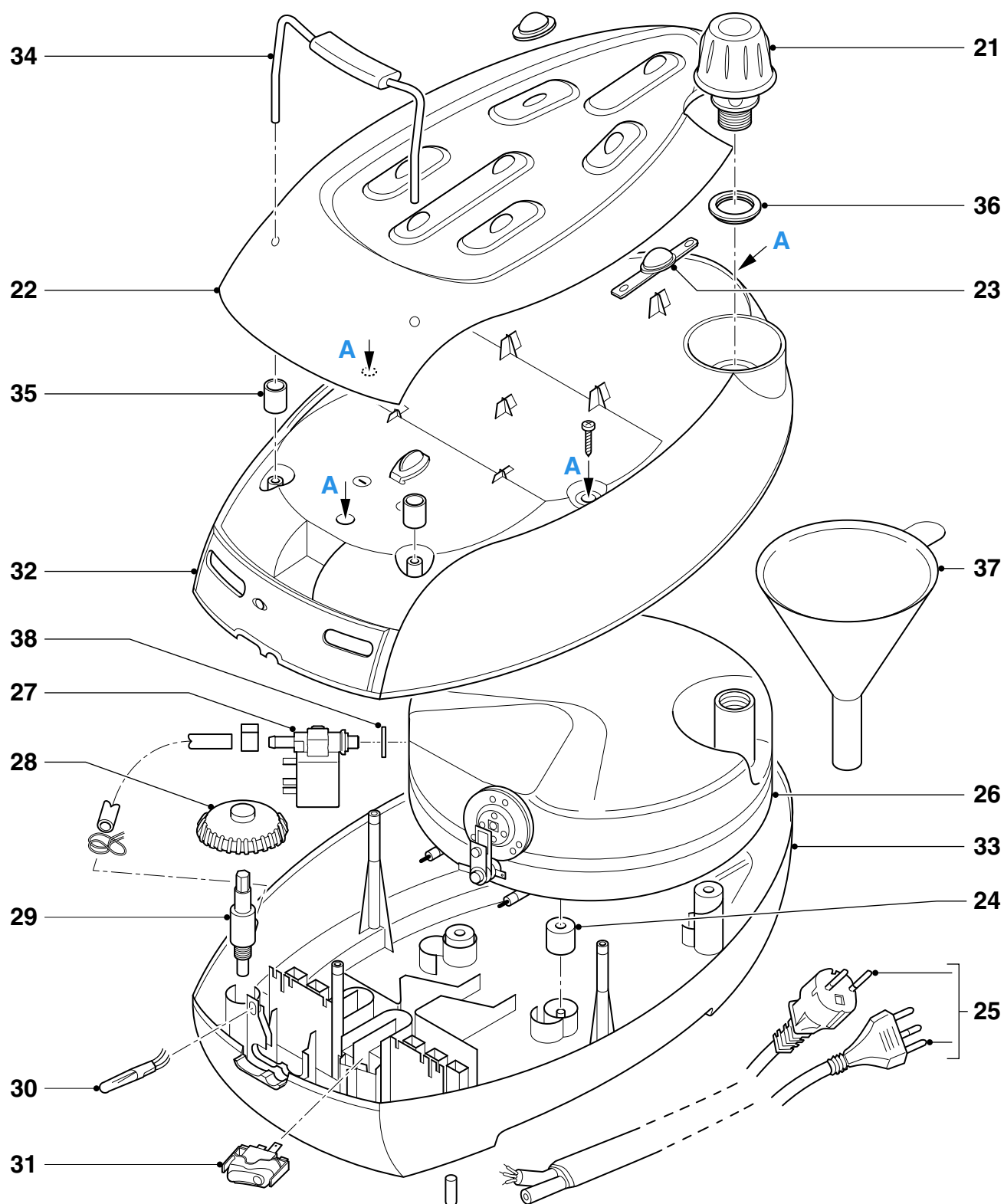


REMEMBER to plug in the hose clamps after inserting back rest to the superior stand.

Note: The hose clamps lock the back rest into position.

REPAIR INSTRUCTIONS - STAND

- For disassembly, you will need a Torx screwdriver 362 TR T20 x 100
- Be careful of the sharp edges of the stainless steel tray assy. Use a **thick glove** when removing the tray assy.
- To avoid damage to the sealings and components of the boiler, **NEVER** clean the boiler with vinegar, descaling agent or other chemicals.
- Apply loctite to the screws on the boiler heating element upon any unscrewing/ screwing operation.
- The boiler is required to be rinsed after every 10 times usage.
- **ALWAYS** replaced boiler assy (Pos 26) when
 - mechanical safety valve at the cap has been activated
 - thermal fuse/thermostat at boiler bottom is open



Pos	Service code	Description
21	4239 021 19600	Safety cap printed assy
22	4239 021 19590	Complete tray
23	4239 015 55310	Tray rubber foot
24	4239 015 55280	Boiler rubber foot
25	4239 000 09150	Intermediate supply cable (Europe)
	4239 000 09260	Intermediate supply cable (Italy)
26	4239 021 19540	Boiler assy welded
27	4239 010 08870	Electrovalve
28	4239 026 15610	Steam Dial
29	4239 021 19610	Steam regulator

Pos	Service code	Description
30	4239 017 08960	Lamp
31	4239 017 08810	Main switch
32	4239 021 19580	Superior stand
33	4239 026 15770	Inferior stand
34	4239 021 19650	Back rest assy
35	4239 026 00230	Hose clamp
36	4239 015 55300	Filling hole gasket
37	4239 021 19680	Anti calc funnel assy
38	4239 017 09151	Teflon ring